



# FADD (phospho Ser191) Polyclonal Antibody

<b>Catalog No</b>	YP-Ab-00216
<b>Isotype</b>	IgG
<b>Reactivity</b>	Mouse
<b>Applications</b>	WB;IHC;IF;ELISA
<b>Gene Name</b>	FADD
<b>Protein Name</b>	Protein FADD
<b>Immunogen</b>	The antiserum was produced against synthesized peptide derived from mouse FADD around the phosphorylation site of Ser191. AA range:157-206
<b>Specificity</b>	Phospho-FADD (S191) Polyclonal Antibody detects endogenous levels of FADD protein only when phosphorylated at S191.
<b>Formulation</b>	Liquid in PBS containing 50% glycerol, 0.5% BSA and 0.02% sodium azide.
<b>Source</b>	Polyclonal, Rabbit,IgG
<b>Purification</b>	The antibody was affinity-purified from rabbit antiserum by affinity-chromatography using epitope-specific immunogen.
<b>Dilution</b>	WB: 1/500 - 1/2000. IHC: 1/100 - 1/300. ELISA: 1/5000.. IF 1:50-200
<b>Concentration</b>	1 mg/ml
<b>Purity</b>	≥90%
<b>Storage Stability</b>	-20°C/1 year
<b>Synonyms</b>	FADD; MORT1; GIG3; Protein FADD; FAS-associated death domain protein; FAS-associating death domain-containing protein; Growth-inhibiting gene 3 protein; Mediator of receptor induced toxicity
<b>Observed Band</b>	25kD
<b>Cell Pathway</b>	
<b>Tissue Specificity</b>	
<b>Function</b>	
<b>Background</b>	The Fas associated via death domain encoded by FADD is an adaptor molecule that interacts with various cell surface receptors and mediates cell apoptotic signals. Through its C-terminal death domain, this protein can be recruited by TNFRSF6/Fas-receptor, tumor necrosis factor receptor, TNFRSF25, and TNFSF10/TRAIL-receptor, and thus it participates in the death signaling initiated by these receptors. Interaction of this protein with the receptors unmasks the N-terminal effector domain of this protein, which allows it to recruit caspase-8, and thereby activate the cysteine protease cascade. Knockout studies in mice also suggest the importance of this protein in early T cell development.



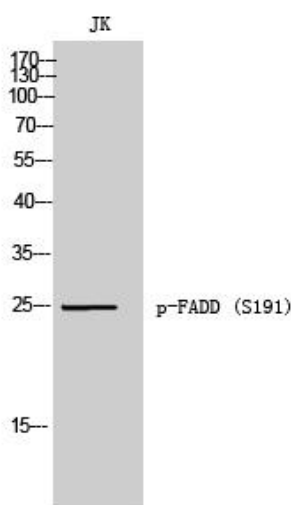
**matters needing attention**

Avoid repeated freezing and thawing!

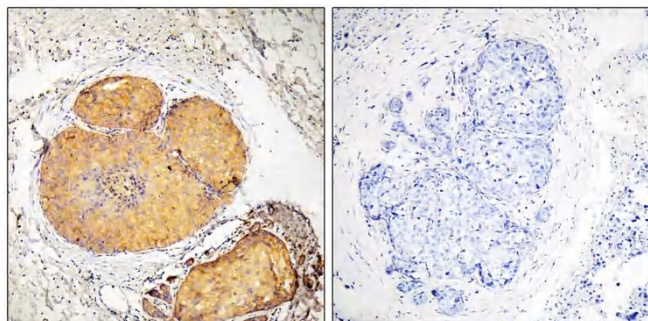
**Usage suggestions**

This product can be used in immunological reaction related experiments. For more information, please consult technical personnel.

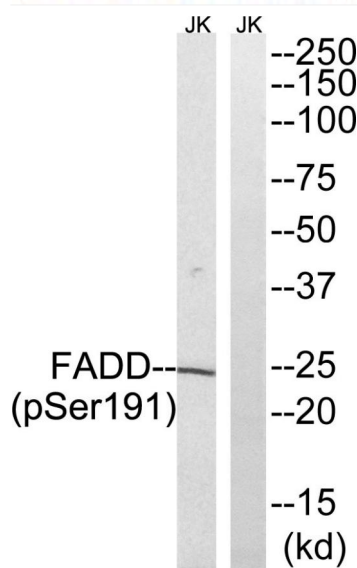
## Products Images



Western Blot analysis of JK cells using Phospho-FADD (S191) Polyclonal Antibody



Immunohistochemistry analysis of paraffin-embedded human breast carcinoma, using FADD (Phospho-Ser191) Antibody. The picture on the right is blocked with the phospho peptide.



Western blot analysis of lysates from Jurkat cells treated with PMA 125ng/ml 30', using FADD (Phospho-Ser191) Antibody. The lane on the right is blocked with the phospho peptide.