



AIFL Polyclonal Antibody

Catalog No	YP-Ab-00295
Isotype	IgG
Reactivity	Human;Mouse
Applications	WB;IHC;IF;ELISA
Gene Name	AIFM3
Protein Name	Apoptosis-inducing factor 3
Immunogen	The antiserum was produced against synthesized peptide derived from human AIFM3. AA range:10-59
Specificity	AIFL Polyclonal Antibody detects endogenous levels of AIFL protein.
Formulation	Liquid in PBS containing 50% glycerol, 0.5% BSA and 0.02% sodium azide.
Source	Polyclonal, Rabbit,IgG
Purification	The antibody was affinity-purified from rabbit antiserum by affinity-chromatography using epitope-specific immunogen.
Dilution	Western Blot: 1/500 - 1/2000. Immunohistochemistry: 1/100 - 1/300. Immunofluorescence: 1/200 - 1/1000. ELISA: 1/40000. Not yet tested in other applications.
Concentration	1 mg/ml
Purity	≥90%
Storage Stability	-20°C/1 year
Synonyms	AIFM3; AIFL; Apoptosis-inducing factor 3; Apoptosis-inducing factor-like protein
Observed Band	67kD
Cell Pathway	Mitochondrion . Does not translocate to the nucleus upon induction of apoptosis.
Tissue Specificity	Ubiquitous. Expressed in bone marrow, cerebral cortex, liver, ovary, thymus, thyroid gland and tongue (at protein level).
Function	domain:The Rieske domain induces apoptosis.,function:Induces apoptosis through a caspase dependent pathway. Reduces mitochondrial membrane potential.,similarity:Belongs to the FAD-dependent oxidoreductase family.,similarity:Contains 1 Rieske domain.,subcellular location:Does not translocate to the nucleus upon induction of apoptosis.,tissue specificity:Ubiquitous. Expressed in bone marrow, cerebral cortex, liver, ovary, thymus, thyroid gland and tongue (at protein level),.
Background	domain:The Rieske domain induces apoptosis.,function:Induces apoptosis through a caspase dependent pathway. Reduces mitochondrial membrane potential.,similarity:Belongs to the FAD-dependent oxidoreductase family.,similarity:Contains 1 Rieske domain.,subcellular location:Does not translocate to the nucleus upon induction of apoptosis.,tissue specificity:Ubiquitous. Expressed in bone marrow, cerebral cortex, liver, ovary,



thymus, thyroid gland and tongue (at protein level),.

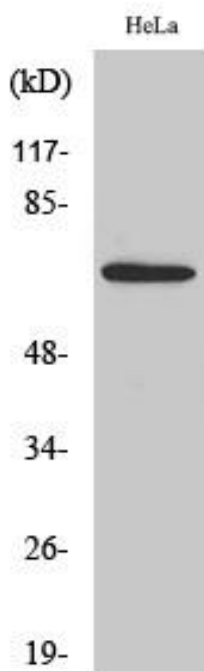
matters needing attention

Avoid repeated freezing and thawing!

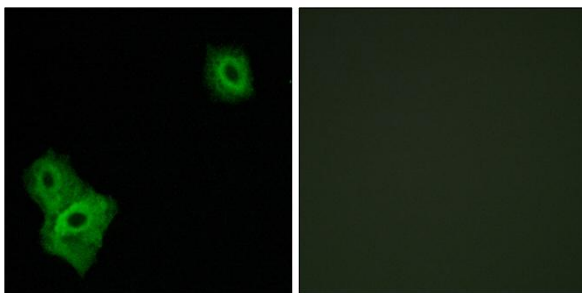
Usage suggestions

This product can be used in immunological reaction related experiments. For more information, please consult technical personnel.

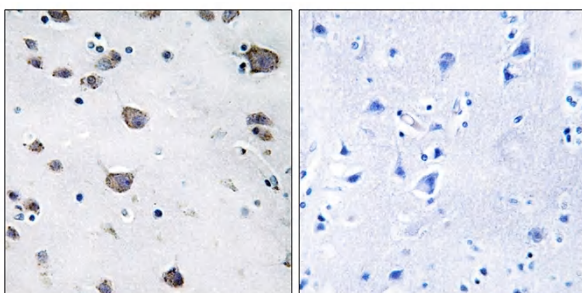
Products Images



Western Blot analysis of various cells using AIFL Polyclonal Antibody



Immunofluorescence analysis of A549 cells, using AIFM3 Antibody. The picture on the right is blocked with the synthesized peptide.



Immunohistochemistry analysis of paraffin-embedded human brain, using AIFM3 Antibody. The picture on the right is blocked with the synthesized peptide.