



Aven Polyclonal Antibody

Catalog No	YP-Ab-00303
Isotype	IgG
Reactivity	Human;Monkey
Applications	WB;IHC;IF;ELISA
Gene Name	AVEN
Protein Name	Cell death regulator Aven
Immunogen	The antiserum was produced against synthesized peptide derived from human AVEN. AA range:301-350
Specificity	Aven Polyclonal Antibody detects endogenous levels of Aven protein.
Formulation	Liquid in PBS containing 50% glycerol, 0.5% BSA and 0.02% sodium azide.
Source	Polyclonal, Rabbit,IgG
Purification	The antibody was affinity-purified from rabbit antiserum by affinity-chromatography using epitope-specific immunogen.
Dilution	Western Blot: 1/500 - 1/2000. Immunohistochemistry: 1/100 - 1/300. Immunofluorescence: 1/200 - 1/1000. ELISA: 1/20000. Not yet tested in other applications.
Concentration	1 mg/ml
Purity	≥90%
Storage Stability	-20°C/1 year
Synonyms	AVEN; Cell death regulator Aven
Observed Band	55kD
Cell Pathway	Endomembrane system; Peripheral membrane protein. Associated with intracellular membranes.
Tissue Specificity	Highly expressed in testis, ovary, thymus, prostate, spleen, small intestine, colon, heart, skeletal muscle, liver, kidney and pancreas.
Function	function:Protects against apoptosis mediated by Apaf-1.,subcellular location:Associated with intracellular membranes.,subunit:Binds Apaf-1, BCL-2 and BAD (Bcl-xl).,tissue specificity:Highly expressed in testis, ovary, thymus, prostate, spleen, small intestine, colon, heart, skeletal muscle, liver, kidney and pancreas.,
Background	function:Protects against apoptosis mediated by Apaf-1.,subcellular location:Associated with intracellular membranes.,subunit:Binds Apaf-1, BCL-2 and BAD (Bcl-xl).,tissue specificity:Highly expressed in testis, ovary, thymus, prostate, spleen, small intestine, colon, heart, skeletal muscle, liver, kidney and pancreas.,



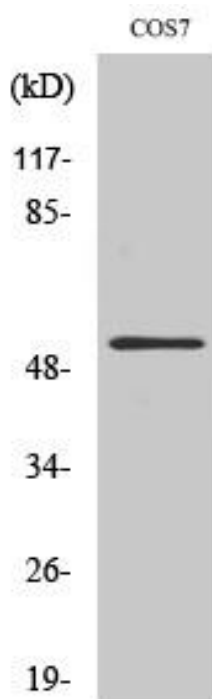
matters needing attention

Avoid repeated freezing and thawing!

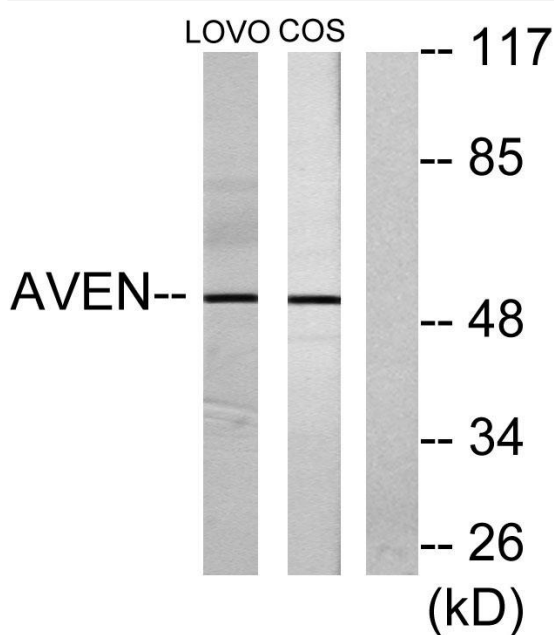
Usage suggestions

This product can be used in immunological reaction related experiments. For more information, please consult technical personnel.

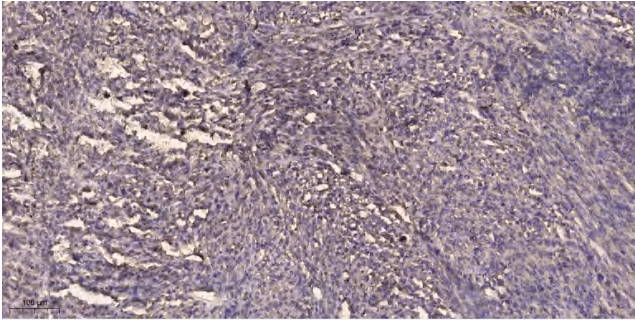
Products Images



Western Blot analysis of various cells using Aven Polyclonal Antibody



Western blot analysis of lysates from COS7 and LOVO cells, using AVEN Antibody. The lane on the right is blocked with the synthesized peptide.



Immunohistochemical analysis of paraffin-embedded human Colon cancer. 1, Antibody was diluted at 1:200(4° overnight). 2, Tris-EDTA,pH9.0 was used for antigen retrieval. 3,Secondary antibody was diluted at 1:200(room temperature, 45min).