



BCSC-1 Polyclonal Antibody

Catalog No	YP-Ab-00326
Isotype	IgG
Reactivity	Human;Rat;Mouse;
Applications	WB;ELISA
Gene Name	VWA5A
Protein Name	von Willebrand factor A domain-containing protein 5A
Immunogen	The antiserum was produced against synthesized peptide derived from human LHR2A. AA range:371-420
Specificity	BCSC-1 Polyclonal Antibody detects endogenous levels of BCSC-1 protein.
Formulation	Liquid in PBS containing 50% glycerol, 0.5% BSA and 0.02% sodium azide.
Source	Polyclonal, Rabbit,IgG
Purification	The antibody was affinity-purified from rabbit antiserum by affinity-chromatography using epitope-specific immunogen.
Dilution	Western Blot: 1/500 - 1/2000. ELISA: 1/20000. Not yet tested in other applications.
Concentration	1 mg/ml
Purity	≥90%
Storage Stability	-20°C/1 year
Synonyms	VWA5A; BCSC1; LOH11CR2A; von Willebrand factor A domain-containing protein 5A; Breast cancer suppressor candidate 1; BCSC-1; Loss of heterozygosity 11 chromosomal region 2 gene A protein
Observed Band	86kD
Cell Pathway	nucleus,nucleoplasm,
Tissue Specificity	Expressed at low level in many tissues. Not expressed in 80% of tumor cell lines tested.
Function	
Background	VWA5A (von Willebrand factor A domain containing 5A), also known as BCSC-1 (breast cancer suppressor candidate 1) or LOH11CR2A (loss of heterozygosity 11 chromosomal region 2 gene A protein), is a 786 amino acid protein containing one VIT domain and one VWFA domain. VWA5A is expressed at low levels in various tissues, with no expression found in 80% of tumor cell lines. Likely acting as a tumor suppressor gene, deletion of VWA5A leads to loss of heterozygosity (LOH) in breast and ovarian tumors, and may have an important role as a potential gene therapy target. Abnormal expression of VWA5A may lead to an increase in adhesion of CNE-2L2 cells associated with an increase in expression of E-cadherin, alpha-catenin, and p53, resulting in a decrease of malignant activity in



cells with ectopic expression of VWA5A. Existing as four alternatively spliced isoforms, the gene encoding VWA5A maps to human chromosome 11q24.2.

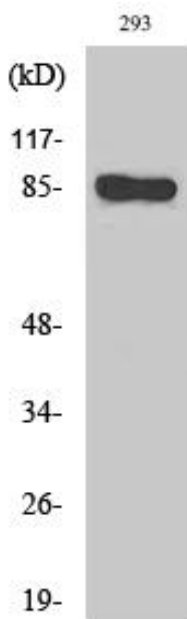
matters needing attention

Avoid repeated freezing and thawing!

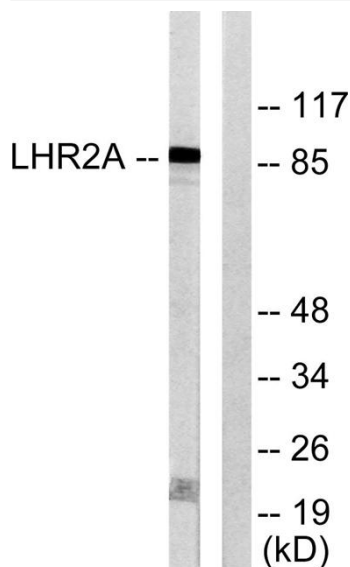
Usage suggestions

This product can be used in immunological reaction related experiments. For more information, please consult technical personnel.

Products Images



Western Blot analysis of various cells using BCSC-1 Polyclonal Antibody



Western blot analysis of lysates from 293 cells, using LHR2A Antibody. The lane on the right is blocked with the synthesized peptide.