



BinCARD Polyclonal Antibody

Catalog No	YP-Ab-00329
Isotype	IgG
Reactivity	Human;Mouse
Applications	IHC;IF;ELISA
Gene Name	C9orf89
Protein Name	Bcl10-interacting CARD protein
Immunogen	The antiserum was produced against synthesized peptide derived from human C9orf89. AA range:21-70
Specificity	BinCARD Polyclonal Antibody detects endogenous levels of BinCARD protein.
Formulation	Liquid in PBS containing 50% glycerol, 0.5% BSA and 0.02% sodium azide.
Source	Polyclonal, Rabbit,IgG
Purification	The antibody was affinity-purified from rabbit antiserum by affinity-chromatography using epitope-specific immunogen.
Dilution	IHC: 1/100 - 1/300. ELISA: 1/40000.. IF 1:50-200
Concentration	1 mg/ml
Purity	≥90%
Storage Stability	-20°C/1 year
Synonyms	C9orf89; Bcl10-interacting CARD protein; BinCARD
Observed Band	
Cell Pathway	[Isoform 1]: Nucleus . Coexpression with BCL10 induced translocation from nucleus to cytosol.; [Isoform 2]: Endoplasmic reticulum membrane ; Single-pass membrane protein . Mitochondrion membrane ; Single-pass membrane protein .
Tissue Specificity	Expressed in ovary, testis, placenta, skeletal muscle, kidney, lung, heart and liver (at protein level). Expressed in thymus and brain.
Function	function:Plays a role in inhibiting the effects of BCL10-induced activation of NF-kappa-B. May inhibit the phosphorylation of BCL10 in a CARD-dependent manner.,PTM:Isoform 2 is phosphorylated upon DNA damage, probably by ATM or ATR.,similarity:Contains 1 CARD domain.,subcellular location:Co-expression with BCL10 induced translocation from nucleus to cytosol.,subunit:Associates with BCL10 by CARD-CARD interaction.,tissue specificity:Expressed in ovary, testis, placenta, skeletal muscle, kidney, lung, heart and liver (at protein level). Expressed in thymus and brain.,
Background	function:Plays a role in inhibiting the effects of BCL10-induced activation of NF-kappa-B. May inhibit the phosphorylation of BCL10 in a CARD-dependent manner.,PTM:Isoform 2 is phosphorylated upon DNA damage, probably by ATM or ATR.,similarity:Contains 1 CARD domain.,subcellular location:Co-expression with BCL10 induced translocation from nucleus to cytosol.,subunit:Associates with



BCL10 by CARD-CARD interaction.,tissue specificity:Expressed in ovary, testis, placenta, skeletal muscle, kidney, lung, heart and liver (at protein level).
Expressed in thymus and brain.,

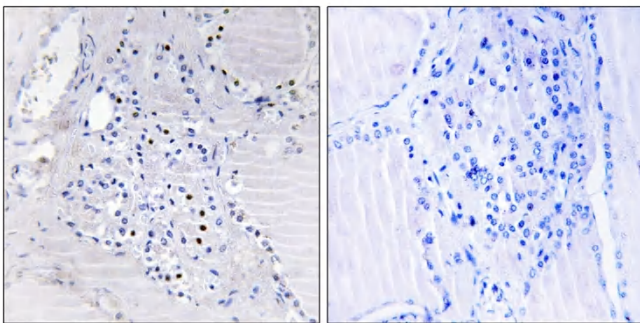
matters needing attention

Avoid repeated freezing and thawing!

Usage suggestions

This product can be used in immunological reaction related experiments. For more information, please consult technical personnel.

Products Images



Immunohistochemistry analysis of paraffin-embedded human thyroid gland tissue, using C9orf89 Antibody. The picture on the right is blocked with the synthesized peptide.