



BNIP-2 Polyclonal Antibody

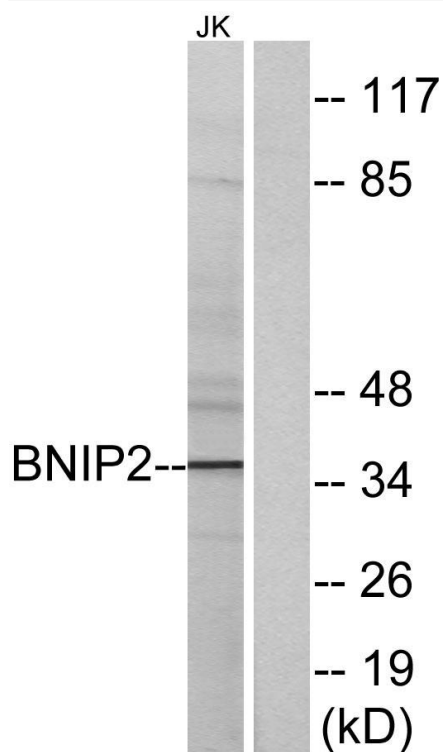
| | |
|----------------------------------|---|
| Catalog No | YP-Ab-00331 |
| Isotype | IgG |
| Reactivity | Human;Rat;Mouse; |
| Applications | WB;IF;FCM;ELISA |
| Gene Name | BNIP2 |
| Protein Name | BCL2/adenovirus E1B 19 kDa protein-interacting protein 2 |
| Immunogen | The antiserum was produced against synthesized peptide derived from human BNIP2. AA range:265-314 |
| Specificity | BNIP-2 Polyclonal Antibody detects endogenous levels of BNIP-2 protein. |
| Formulation | Liquid in PBS containing 50% glycerol, 0.5% BSA and 0.02% sodium azide. |
| Source | Polyclonal, Rabbit,IgG |
| Purification | The antibody was affinity-purified from rabbit antiserum by affinity-chromatography using epitope-specific immunogen. |
| Dilution | Western Blot: 1/500 - 1/2000. Immunofluorescence: 1/200 - 1/1000. Flow cytometry: 1/200 - 1/400. ELISA: 1/40000. Not yet tested in other applications. |
| Concentration | 1 mg/ml |
| Purity | ≥90% |
| Storage Stability | -20°C/1 year |
| Synonyms | BNIP2; NIP2; BCL2/adenovirus E1B 19 kDa protein-interacting protein 2 |
| Observed Band | 36kD |
| Cell Pathway | Cytoplasm. Cytoplasm, perinuclear region. Localizes to the nuclear envelope region and to other cytoplasmic structures. |
| Tissue Specificity | Eye,Platelet, |
| Function | function:Implicated in the suppression of cell death. Interacts with the BCL-2 and adenovirus E1B 19 kDa proteins.,similarity:Contains 1 CRAL-TRIO domain.,subcellular location:Localizes to the nuclear envelope region and to other cytoplasmic structures., |
| Background | This gene is a member of the BCL2/adenovirus E1B 19 kd-interacting protein (BNIP) family. It interacts with the E1B 19 kDa protein, which protects cells from virally-induced cell death. The encoded protein also interacts with E1B 19 kDa-like sequences of BCL2, another apoptotic protector. Alternate splicing results in multiple transcript variants. [provided by RefSeq, Mar 2016], |
| matters needing attention | Avoid repeated freezing and thawing! |



Usage suggestions

This product can be used in immunological reaction related experiments. For more information, please consult technical personnel.

Products Images



Western blot analysis of lysates from Jurkat cells, using BNIP2 Antibody. The lane on the right is blocked with the synthesized peptide.