

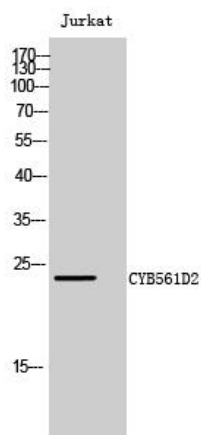


# CYB561D2 Polyclonal Antibody

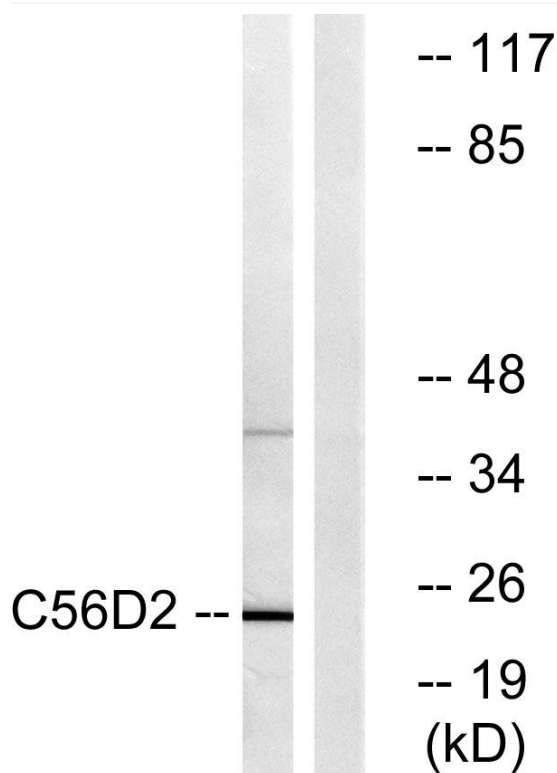
<b>Catalog No</b>	YP-Ab-00364
<b>Isotype</b>	IgG
<b>Reactivity</b>	Human;Rat;Mouse;
<b>Applications</b>	WB;ELISA
<b>Gene Name</b>	CYB561D2
<b>Protein Name</b>	Cytochrome b561 domain-containing protein 2
<b>Immunogen</b>	The antiserum was produced against synthesized peptide derived from human C56D2. AA range:55-104
<b>Specificity</b>	CYB561D2 Polyclonal Antibody detects endogenous levels of CYB561D2 protein.
<b>Formulation</b>	Liquid in PBS containing 50% glycerol, 0.5% BSA and 0.02% sodium azide.
<b>Source</b>	Polyclonal, Rabbit,IgG
<b>Purification</b>	The antibody was affinity-purified from rabbit antiserum by affinity-chromatography using epitope-specific immunogen.
<b>Dilution</b>	Western Blot: 1/500 - 1/2000. ELISA: 1/20000. Not yet tested in other applications.
<b>Concentration</b>	1 mg/ml
<b>Purity</b>	≥90%
<b>Storage Stability</b>	-20°C/1 year
<b>Synonyms</b>	CYB561D2; 101F6; LUCA12.2; Cytochrome b561 domain-containing protein 2; Putative tumor suppressor protein 101F6
<b>Observed Band</b>	24kD
<b>Cell Pathway</b>	Endoplasmic reticulum membrane ; Multi-pass membrane protein . Cytoplasmic vesicle membrane ; Multi-pass membrane protein .
<b>Tissue Specificity</b>	Pancreas,
<b>Function</b>	cofactor: Binds 2 heme groups non-covalently.,similarity: Contains 1 cytochrome b561 domain.,
<b>Background</b>	cofactor: Binds 2 heme groups non-covalently.,similarity: Contains 1 cytochrome b561 domain.,
<b>matters needing attention</b>	Avoid repeated freezing and thawing!
<b>Usage suggestions</b>	This product can be used in immunological reaction related experiments. For more information, please consult technical personnel.



## Products Images



Western Blot analysis of Jurkat cells using CYB561D2 Polyclonal Antibody



Western blot analysis of lysates from Jurkat cells, using C56D2 Antibody. The lane on the right is blocked with the synthesized peptide.