



# DBC-1 Polyclonal Antibody

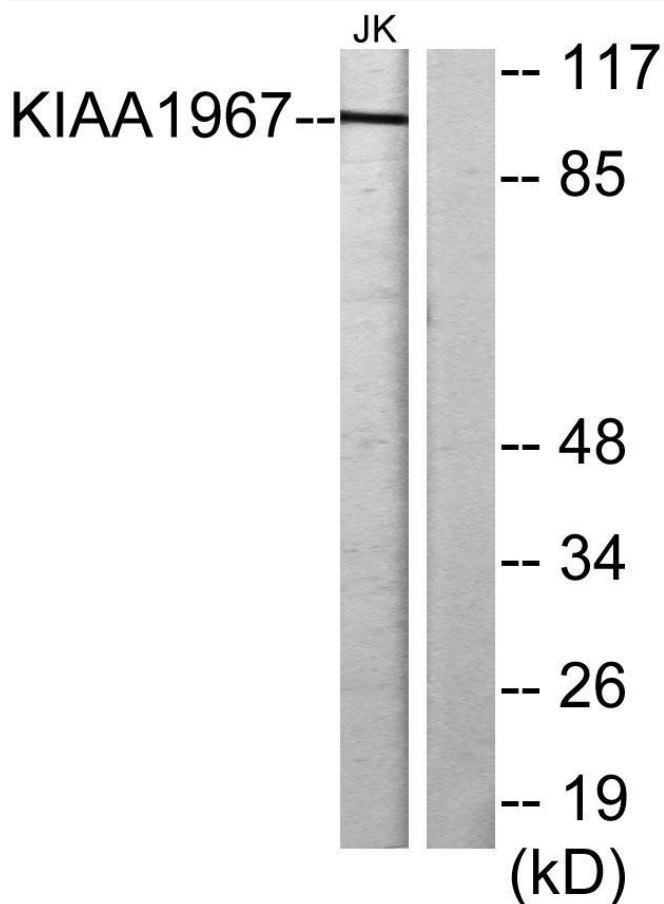
<b>Catalog No</b>	YP-Ab-00372
<b>Isotype</b>	IgG
<b>Reactivity</b>	Human;Rat;Mouse;
<b>Applications</b>	WB;IHC;IF;ELISA
<b>Gene Name</b>	KIAA1967
<b>Protein Name</b>	DBIRD complex subunit KIAA1967
<b>Immunogen</b>	The antiserum was produced against synthesized peptide derived from human KIAA1967. AA range:431-480
<b>Specificity</b>	DBC-1 Polyclonal Antibody detects endogenous levels of DBC-1 protein.
<b>Formulation</b>	Liquid in PBS containing 50% glycerol, 0.5% BSA and 0.02% sodium azide.
<b>Source</b>	Polyclonal, Rabbit,IgG
<b>Purification</b>	The antibody was affinity-purified from rabbit antiserum by affinity-chromatography using epitope-specific immunogen.
<b>Dilution</b>	WB: 1/500 - 1/2000. ELISA: 1/20000.. IF 1:50-200
<b>Concentration</b>	1 mg/ml
<b>Purity</b>	≥90%
<b>Storage Stability</b>	-20°C/1 year
<b>Synonyms</b>	KIAA1967; DBC1; DBIRD complex subunit KIAA1967; Deleted in breast cancer gene 1 protein; DBC-1; DBC.1; p30 DBC
<b>Observed Band</b>	102kD
<b>Cell Pathway</b>	Nucleus . Cytoplasm . Cytoplasm, cytoskeleton, spindle . Recruited to chromatin, post-UV irradiation. Sequestered to the cytoplasm in the presence of MCC. Translocated to the cytoplasm during UV-induced apoptosis. .
<b>Tissue Specificity</b>	Expressed in gastric carcinoma tissue and the expression gradually increases with the progression of the carcinoma (at protein level). Expressed ubiquitously in normal tissues. Expressed in 84 to 100% of neoplastic breast, lung, and colon tissues.
<b>Function</b>	tissue specificity:Expressed ubiquitously in normal tissues. Expressed in 84 to 100% of neoplastic breast, lung, and colon tissues.,
<b>Background</b>	tissue specificity:Expressed ubiquitously in normal tissues. Expressed in 84 to 100% of neoplastic breast, lung, and colon tissues.,
<b>matters needing attention</b>	Avoid repeated freezing and thawing!



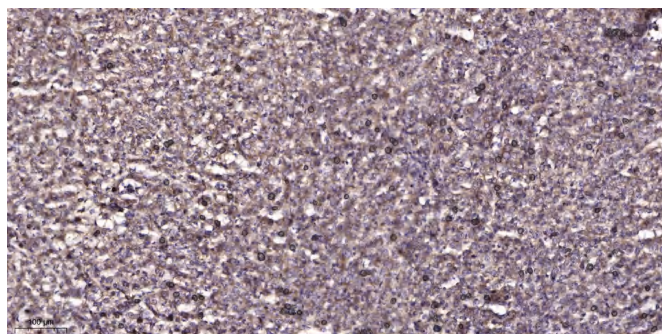
**Usage suggestions**

This product can be used in immunological reaction related experiments. For more information, please consult technical personnel.

**Products Images**



Western blot analysis of lysates from Jurkat cells, using KIAA1967 Antibody. The lane on the right is blocked with the synthesized peptide.



Immunohistochemical analysis of paraffin-embedded human liver cancer. 1, Antibody was diluted at 1:200(4° overnight). 2, Tris-EDTA,pH9.0 was used for antigen retrieval. 3,Secondary antibody was diluted at 1:200(room temperature, 45min).