



# Dmc1 Polyclonal Antibody

<b>Catalog No</b>	YP-Ab-00377
<b>Isotype</b>	IgG
<b>Reactivity</b>	Human;Mouse
<b>Applications</b>	IHC;IF;ELISA
<b>Gene Name</b>	DMC1
<b>Protein Name</b>	Meiotic recombination protein DMC1/LIM15 homolog
<b>Immunogen</b>	The antiserum was produced against synthesized peptide derived from human DMC1. AA range:61-110
<b>Specificity</b>	Dmc1 Polyclonal Antibody detects endogenous levels of Dmc1 protein.
<b>Formulation</b>	Liquid in PBS containing 50% glycerol, 0.5% BSA and 0.02% sodium azide.
<b>Source</b>	Polyclonal, Rabbit,IgG
<b>Purification</b>	The antibody was affinity-purified from rabbit antiserum by affinity-chromatography using epitope-specific immunogen.
<b>Dilution</b>	IHC: 1/100 - 1/300. ELISA: 1/10000.. IF 1:50-200
<b>Concentration</b>	1 mg/ml
<b>Purity</b>	≥90%
<b>Storage Stability</b>	-20°C/1 year
<b>Synonyms</b>	DMC1; DMC1H; LIM15; Meiotic recombination protein DMC1/LIM15 homolog
<b>Observed Band</b>	
<b>Cell Pathway</b>	Nucleus . Chromosome .
<b>Tissue Specificity</b>	Ovary,Testis,Thymus,
<b>Function</b>	function:May participate in meiotic recombination, specifically in homologous strand assimilation, which is required for the resolution of meiotic double-strand breaks.,similarity:Belongs to the recA family. DMC1 subfamily.,similarity:Contains 1 HhH domain.,subunit:Interacts with the MND1-PSMC3IP heterodimer (By similarity). Double stacked ring-shaped homooctamer.,
<b>Background</b>	DNA meiotic recombinase 1(DMC1) Homo sapiens This gene encodes a member of the superfamily of recombinases (also called DNA strand-exchange proteins). Recombinases are important for repairing double-strand DNA breaks during mitosis and meiosis. This protein, which is evolutionarily conserved, is reported to be essential for meiotic homologous recombination and may thus play an important role in generating diversity of genetic information. Alternative splicing results in multiple transcript variants. [provided by RefSeq, May 2013],

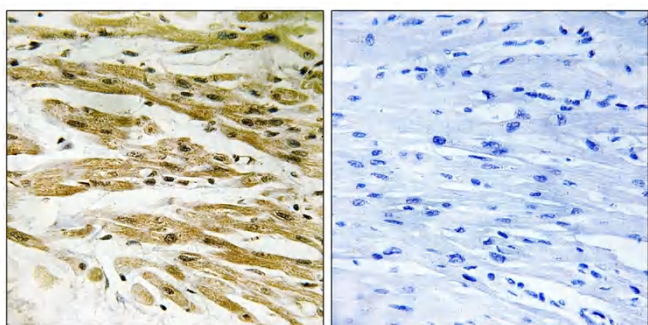
**matters needing attention**

Avoid repeated freezing and thawing!

**Usage suggestions**

This product can be used in immunological reaction related experiments. For more information, please consult technical personnel.

## Products Images



Immunohistochemistry analysis of paraffin-embedded human heart tissue, using DMC1 Antibody. The picture on the right is blocked with the synthesized peptide.