

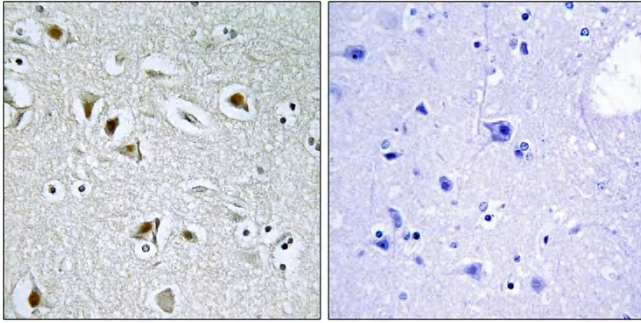


DOC-1R Polyclonal Antibody

Catalog No	YP-Ab-00384
Isotype	IgG
Reactivity	Human;Mouse
Applications	IHC;IF;ELISA
Gene Name	CDK2AP2
Protein Name	Cyclin-dependent kinase 2-associated protein 2
Immunogen	The antiserum was produced against synthesized peptide derived from human CDKA2. AA range:51-100
Specificity	DOC-1R Polyclonal Antibody detects endogenous levels of DOC-1R protein.
Formulation	Liquid in PBS containing 50% glycerol, 0.5% BSA and 0.02% sodium azide.
Source	Polyclonal, Rabbit,IgG
Purification	The antibody was affinity-purified from rabbit antiserum by affinity-chromatography using epitope-specific immunogen.
Dilution	IHC: 1/100 - 1/300. ELISA: 1/5000.. IF 1:50-200
Concentration	1 mg/ml
Purity	≥90%
Storage Stability	-20°C/1 year
Synonyms	CDK2AP2; DOC1R; Cyclin-dependent kinase 2-associated protein 2; CDK2-associated protein 2; DOC-1-related protein; DOC-1R
Observed Band	
Cell Pathway	Cytoplasm . Nucleus . Accumulates in immature oocytes in the nucleus. During the first meiotic division, accumulates in the cytoplasm and localizes in dots in the vicinity of the chromosomes in a region enriched in microtubules. .
Tissue Specificity	Ubiquitous.
Function	similarity:Belongs to the CDK2AP family.,tissue specificity:Ubiquitous.,
Background	cyclin dependent kinase 2 associated protein 2(CDK2AP2) Homo sapiens This gene encodes a protein that interacts with cyclin-dependent kinase 2 associated protein 1. Pseudogenes associated with this gene are located on chromosomes 7 and 9. Alternatively spliced transcript variants have been observed for this gene. [provided by RefSeq, Dec 2012],
matters needing attention	Avoid repeated freezing and thawing!

**Usage suggestions**

This product can be used in immunological reaction related experiments. For more information, please consult technical personnel.

Products Images

Immunohistochemistry analysis of paraffin-embedded human brain tissue, using CDKA2 Antibody. The picture on the right is blocked with the synthesized peptide.