



MBD3 Polyclonal Antibody

Catalog No	YP-Ab-01859
Isotype	IgG
Reactivity	Human;Mouse
Applications	WB;ELISA;IHC
Gene Name	MBD3
Protein Name	Methyl-CpG-binding domain protein 3
Immunogen	The antiserum was produced against synthesized peptide derived from human MBD3. AA range:221-270
Specificity	MBD3 Polyclonal Antibody detects endogenous levels of MBD3 protein.
Formulation	Liquid in PBS containing 50% glycerol, 0.5% BSA and 0.02% sodium azide.
Source	Polyclonal, Rabbit,IgG
Purification	The antibody was affinity-purified from rabbit antiserum by affinity-chromatography using epitope-specific immunogen.
Dilution	WB 1:500-2000;IHC-p 1:50-300; ELISA 2000-20000
Concentration	1 mg/ml
Purity	≥90%
Storage Stability	-20°C/1 year
Synonyms	MBD3; Methyl-CpG-binding domain protein 3; Methyl-CpG-binding protein MBD3
Observed Band	33kD
Cell Pathway	Nucleus. Chromosome. Nuclear, in discrete foci. Detected on chromatin, at promoter regions of active genes.
Tissue Specificity	Brain,Cervix,Eye,Muscle,Uterus,
Function	function:Does not bind DNA by itself. Recruits histone deacetylases and DNA methyltransferases. Acts as transcriptional repressor and plays a role in gene silencing.,similarity:Contains 1 MBD (methyl-CpG-binding) domain.,subcellular location:Nuclear, in discrete foci.,subunit:Heterodimer with MBD2. Part of the NuRD and the MeCP1 complex. Binds HDAC1, MTA2, DNMT1, p66-alpha and p66-beta.,
Background	DNA methylation is the major modification of eukaryotic genomes and plays an essential role in mammalian development. This gene belongs to a family of nuclear proteins which are characterized by the presence of a methyl-CpG binding domain (MBD). The encoded protein is a subunit of the NuRD, a multisubunit complex containing nucleosome remodeling and histone deacetylase activities. Unlike the other family members, the encoded protein is not capable of binding to methylated DNA. The protein mediates the association of metastasis-associated protein 2 with the core histone deacetylase complex.



Alternative splicing results in multiple transcript variants of this gene. [provided by RefSeq, Jul 2013],

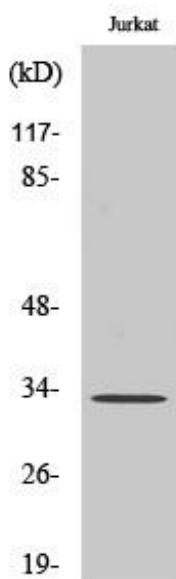
matters needing attention

Avoid repeated freezing and thawing!

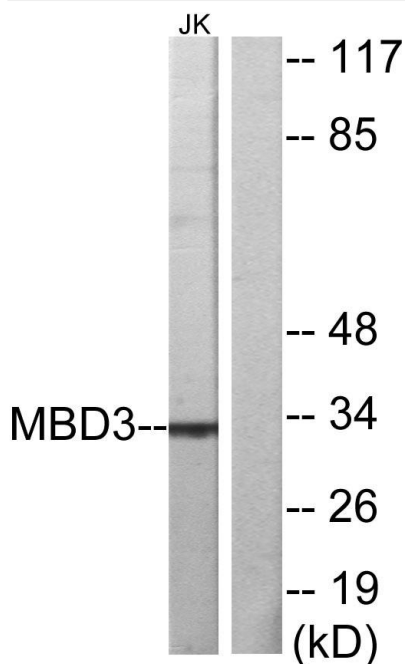
Usage suggestions

This product can be used in immunological reaction related experiments. For more information, please consult technical personnel.

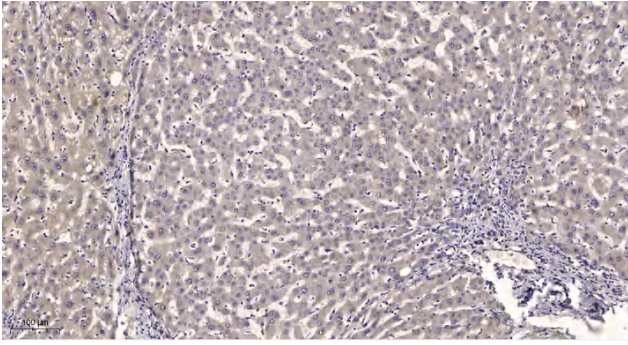
Products Images



Western Blot analysis of various cells using MBD3 Polyclonal Antibody



Western blot analysis of lysates from Jurkat cells, using MBD3 Antibody. The lane on the right is blocked with the synthesized peptide.



Immunohistochemical analysis of paraffin-embedded human liver cancer. 1, Antibody was diluted at 1:200(4° overnight). 2, Tris-EDTA,pH9.0 was used for antigen retrieval. 3,Secondary antibody was diluted at 1:200(room temperature, 45min).