



# Tensin-1 (phospho Tyr1326) Polyclonal Antibody

<b>Catalog No</b>	YP-Ab-03065
<b>Isotype</b>	IgG
<b>Reactivity</b>	Human;Mouse
<b>Applications</b>	WB;ELISA
<b>Gene Name</b>	TNS1
<b>Protein Name</b>	Tensin-1
<b>Immunogen</b>	Synthesized phospho-peptide around the phosphorylation site of human Tensin-1 (phospho Tyr1326)
<b>Specificity</b>	Phospho-Tensin-1 (Y1326) Polyclonal Antibody detects endogenous levels of Tensin-1 protein only when phosphorylated at Y1326.
<b>Formulation</b>	Liquid in PBS containing 50% glycerol, 0.5% BSA and 0.02% sodium azide.
<b>Source</b>	Polyclonal, Rabbit,IgG
<b>Purification</b>	The antibody was affinity-purified from rabbit antiserum by affinity-chromatography using epitope-specific immunogen.
<b>Dilution</b>	Western Blot: 1/500 - 1/2000. ELISA: 1/20000. Not yet tested in other applications.
<b>Concentration</b>	1 mg/ml
<b>Purity</b>	≥90%
<b>Storage Stability</b>	-20°C/1 year
<b>Synonyms</b>	TNS1; TNS; Tensin-1
<b>Observed Band</b>	185kD
<b>Cell Pathway</b>	Cell surface . Cell junction, focal adhesion . Cytoplasm, cytoskeleton . Localized at cell periphery preferentially to fibrillar adhesions than focal adhesions. Translocates from the cell edge to cell center in an ITGB1BP1-dependent manner.
<b>Tissue Specificity</b>	Ubiquitous.
<b>Function</b>	function:May be involved in cell migration, cartilage development and in linking signal transduction pathways to the cytoskeleton.,PTM:Rapidly cleaved by calpain II.,PTM:Tyrosine phosphorylated.,similarity:Contains 1 C2 tensin-type domain.,similarity:Contains 1 phosphatase tensin-type domain.,similarity:Contains 1 SH2 domain.,subunit:Binds to actin filaments and interacts with phosphotyrosine-containing proteins. Interacts with STARD8.,tissue specificity:Ubiquitous.,
<b>Background</b>	The protein encoded by this gene localizes to focal adhesions, regions of the plasma membrane where the cell attaches to the extracellular matrix. This protein crosslinks actin filaments and contains a Src homology 2 (SH2) domain, which is often found in molecules involved in signal transduction. This protein is a substrate of calpain II. Alternative splicing results in multiple transcript variants



encoding different isoforms. [provided by RefSeq, Apr 2015],

**matters needing attention**

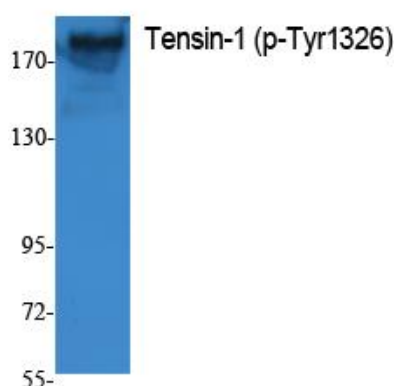
Avoid repeated freezing and thawing!

**Usage suggestions**

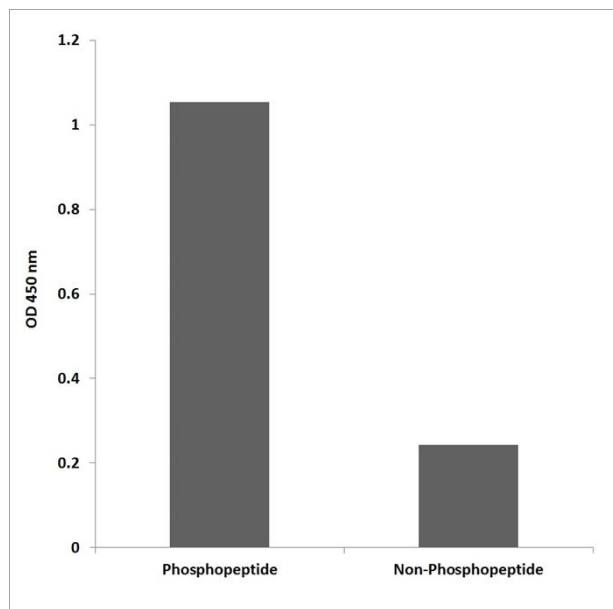
This product can be used in immunological reaction related experiments. For more information, please consult technical personnel.

**Products Images**

(kD)



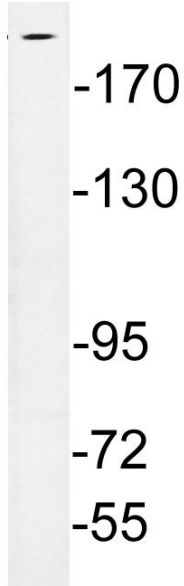
Western Blot analysis of extracts from K562 cells, using Phospho-Tensin-1 (Y1326) Polyclonal Antibody.



Enzyme-Linked Immunosorbent Assay (Phospho-ELISA) for Immunogen Phosphopeptide (Phospho-left) and Non-Phosphopeptide (Phospho-right), using Tensin-1 (Phospho-Tyr1326) Antibody



p-Tensin-1  
(Y1326)-



Western blot analysis of lysates from A10 cells, using phospho-Thrensin-1 (Phospho-Tyr1326) antibody.