



# Actin $\beta$ Polyclonal Antibody

<b>Catalog No</b>	YP-Ab-03079
<b>Isotype</b>	IgG
<b>Reactivity</b>	Human;Mouse;Rat;Chicken;Globefish ;Bovine;Hamster;Pig;Ovine;Cat;Pig;Dog;Sheep
<b>Applications</b>	IF;WB;IHC;ELISA
<b>Gene Name</b>	ACTB
<b>Protein Name</b>	Actin cytoplasmic 1
<b>Immunogen</b>	Synthesized peptide derived from the N-terminal region of human Actin $\beta$ . AA range: 1-80
<b>Specificity</b>	Actin $\beta$ Polyclonal Antibody detects endogenous levels of Actin $\beta$ protein.
<b>Formulation</b>	Liquid in PBS containing 50% glycerol, 0.5% BSA and 0.02% sodium azide.
<b>Source</b>	Polyclonal, Rabbit,IgG
<b>Purification</b>	The antibody was affinity-purified from rabbit antiserum by affinity-chromatography using epitope-specific immunogen.
<b>Dilution</b>	IF: 1:50-200 Western Blot: 1/2000 - 1/10000. Immunohistochemistry: 1/100 - 1/300. ELISA: 1/20000. Not yet tested in other applications.
<b>Concentration</b>	1 mg/ml
<b>Purity</b>	$\geq 90\%$
<b>Storage Stability</b>	-20°C/1 year
<b>Synonyms</b>	ACTB; Actin; cytoplasmic 1; Beta-actin; Actin $\beta$ ; $\beta$ -Actin; Beta actin
<b>Observed Band</b>	42kD
<b>Cell Pathway</b>	Cytoplasm, cytoskeleton . Nucleus . Localized in cytoplasmic mRNP granules containing untranslated mRNAs. .
<b>Tissue Specificity</b>	B-cell lymphoma,Brain,Cajal-Retzius cell,Eye,Fetal brain cortex,Foreskin,Hepatocellular car
<b>Function</b>	disease:Defects in ACTB are a cause of dystonia juvenile-onset (DYTJ) [MIM:607371]. DYTJ is a form of dystonia with juvenile onset. Dystonia is defined by the presence of sustained involuntary muscle contraction, often leading to abnormal postures. DYTJ patients manifest progressive, generalized, dopa-unresponsive dystonia, developmental malformations and sensory hearing loss.,function:Actins are highly conserved proteins that are involved in various types of cell motility and are ubiquitously expressed in all eukaryotic cells.,miscellaneous:In vertebrates 3 main groups of actin isoforms, alpha, beta and gamma have been identified. The alpha actins are found in muscle tissues and are a major constituent of the contractile apparatus. The beta and gamma actins coexist in most cell types as components of the cytoskeleton and as mediators of internal cell motility.,similarity:Belongs to the

**Background**

This gene encodes one of six different actin proteins. Actins are highly conserved proteins that are involved in cell motility, structure, and integrity. This actin is a major constituent of the contractile apparatus and one of the two nonmuscle cytoskeletal actins. [provided by RefSeq, Jul 2008],

**matters needing attention**

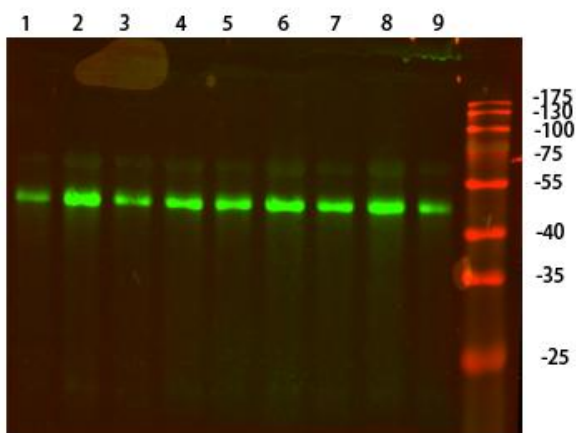
Avoid repeated freezing and thawing!

**Usage suggestions**

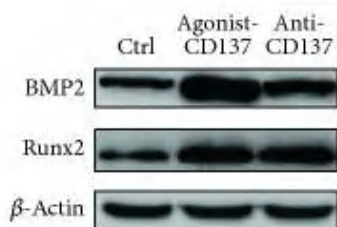
This product can be used in immunological reaction related experiments. For more information, please consult technical personnel.



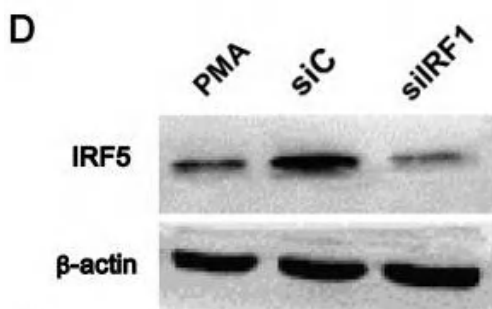
Products Images



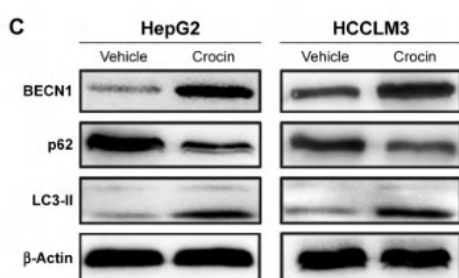
Liu, Fengchao, et al. "Prolonged inhibition of class I PI3K promotes liver cancer stem cell expansion by augmenting SGK3/GSK-3 $\beta$ / $\beta$ -catenin signalling." *Journal of Experimental & Clinical Cancer Research* 37.1 (2018): 122.



Chen, Rui, et al. "Activation of CD137 Signaling Enhances Vascular Calcification through c-Jun N-Terminal Kinase-Dependent Disruption of Autophagic Flux." *Mediators of inflammation* 2018 (2018).



Xie, Changli, et al. "Effects of IRF1 and IFN- $\beta$  interaction on the M1 polarization of macrophages and its antitumor function." *International journal of molecular medicine* 38.1 (2016): 148-160.



Yao, Chong, et al. "Crocin induces autophagic apoptosis in hepatocellular carcinoma by inhibiting Akt/mTOR activity." *OncoTargets and therapy* 11 (2018): 2017.



Li, Haiming, et al. "Collagen External Scaffolds Mitigate Intimal Hyperplasia and Improve Remodeling of Vein Grafts in a Rabbit Arteriovenous Graft Model." *BioMed Research International* 2017 (2017).