



Calponin 2 Polyclonal Antibody

Catalog No	YP-Ab-03095
Isotype	IgG
Reactivity	Human;Mouse
Applications	WB;IF;ELISA
Gene Name	CNN2
Protein Name	Calponin-2
Immunogen	The antiserum was produced against synthesized peptide derived from human CNN2. AA range:121-170
Specificity	Calponin 2 Polyclonal Antibody detects endogenous levels of Calponin 2 protein.
Formulation	Liquid in PBS containing 50% glycerol, 0.5% BSA and 0.02% sodium azide.
Source	Polyclonal, Rabbit,IgG
Purification	The antibody was affinity-purified from rabbit antiserum by affinity-chromatography using epitope-specific immunogen.
Dilution	Western Blot: 1/500 - 1/2000. Immunofluorescence: 1/200 - 1/1000. ELISA: 1/40000. Not yet tested in other applications.
Concentration	1 mg/ml
Purity	≥90%
Storage Stability	-20°C/1 year
Synonyms	CNN2; Calponin-2; Calponin H2; smooth muscle; Neutral calponin
Observed Band	33kD
Cell Pathway	stress fiber,cytoskeleton,cell-cell junction,cell-cell adherens junction,focal adhesion,membrane,extracellular exosome,
Tissue Specificity	Heart and smooth muscle.
Function	function:Thin filament-associated protein that is implicated in the regulation and modulation of smooth muscle contraction. It is capable of binding to actin, calmodulin, troponin C and tropomyosin. The interaction of calponin with actin inhibits the actomyosin Mg-ATPase activity.,similarity:Belongs to the calponin family.,similarity:Contains 1 CH (calponin-homology) domain.,similarity:Contains 3 calponin-like repeats.,tissue specificity:Heart and smooth muscle.,
Background	The protein encoded by this gene, which can bind actin, calmodulin, troponin C, and tropomyosin, may function in the structural organization of actin filaments. The encoded protein could play a role in smooth muscle contraction and cell adhesion. Several pseudogenes of this gene have been identified, and are present on chromosomes 1, 2, 3, 6, 9, 11, 13, 15, 16, 21 and 22. Alternative splicing results in multiple transcript variants encoding different isoforms. [provided by RefSeq, Jan 2015],



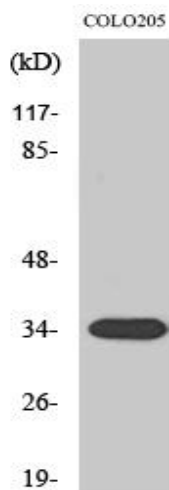
matters needing attention

Avoid repeated freezing and thawing!

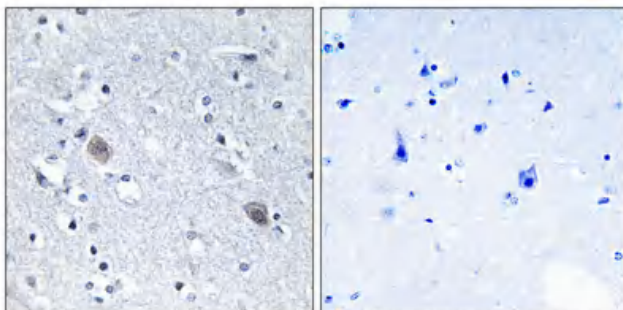
Usage suggestions

This product can be used in immunological reaction related experiments. For more information, please consult technical personnel.

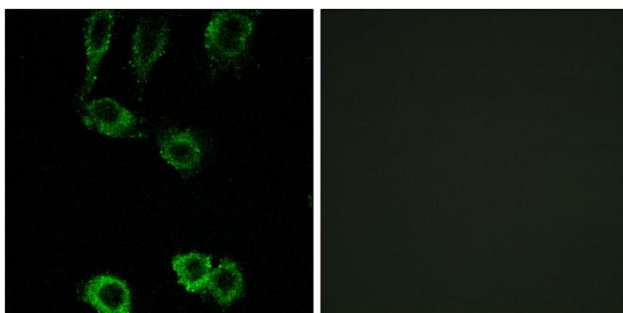
Products Images



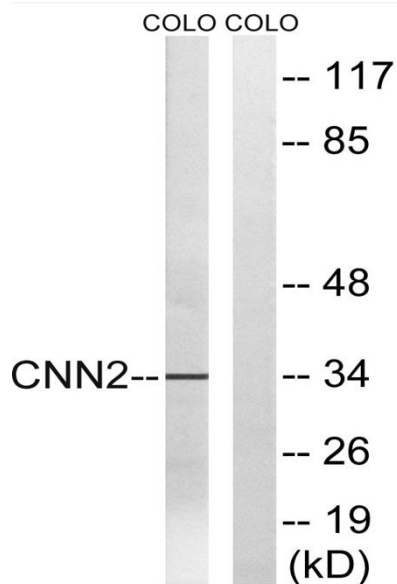
Western Blot analysis of various cells using Calponin 2 Polyclonal Antibody



Immunohistochemical analysis of paraffin-embedded Human brain. Antibody was diluted at 1:100(4° overnight). High-pressure and temperature Tris-EDTA,pH8.0 was used for antigen retrieval. Negative contrl (right) obtaned from antibody was pre-absorbed by immunogen peptide.



Immunofluorescence analysis of A549 cells, using CNN2 Antibody. The picture on the right is blocked with the synthesized peptide.



Western blot analysis of lysates from COLO cells, using CNN2 Antibody. The lane on the right is blocked with the synthesized peptide.