



CIB2 Polyclonal Antibody

Catalog No	YP-Ab-03099
Isotype	IgG
Reactivity	Human;Mouse;Rat
Applications	IHC;IF;ELISA
Gene Name	CIB2
Protein Name	Calcium and integrin-binding family member 2
Immunogen	The antiserum was produced against synthesized peptide derived from human CIB2. AA range:21-70
Specificity	CIB2 Polyclonal Antibody detects endogenous levels of CIB2 protein.
Formulation	Liquid in PBS containing 50% glycerol, 0.5% BSA and 0.02% sodium azide.
Source	Polyclonal, Rabbit,IgG
Purification	The antibody was affinity-purified from rabbit antiserum by affinity-chromatography using epitope-specific immunogen.
Dilution	IHC: 1/100 - 1/300. ELISA: 1/5000.. IF 1:50-200
Concentration	1 mg/ml
Purity	≥90%
Storage Stability	-20°C/1 year
Synonyms	CIB2; KIP2; Calcium and integrin-binding family member 2; Kinase-interacting protein 2; KIP 2
Observed Band	
Cell Pathway	Cytoplasm . Cell projection, stereocilium . Photoreceptor inner segment . Cell projection, cilium, photoreceptor outer segment . Cell membrane, sarcolemma . Colocalized with ITGA7 at the myotendinous junctions (MTJ) and at the neuromuscular junctions (NMJ) (By similarity). Localizes in the cuticular plate along and at the tip of the stereocilia of vestibular sensory hair cells (PubMed:26173970, PubMed:26426422). .
Tissue Specificity	Widely expressed (PubMed:23023331).
Function	similarity:Contains 3 EF-hand domains.,tissue specificity:Ubiquitous.,
Background	The protein encoded by this gene is similar to that of KIP/CIB, calcineurin B, and calmodulin. The encoded protein is a calcium-binding regulatory protein that interacts with DNA-dependent protein kinase catalytic subunits (DNA-PKcs), and it is involved in photoreceptor cell maintenance. Mutations in this gene cause deafness, autosomal recessive, 48 (DFNB48), and also Usher syndrome 1J (USH1J). Alternative splicing results in multiple transcript variants. [provided by RefSeq, Jul 2014],

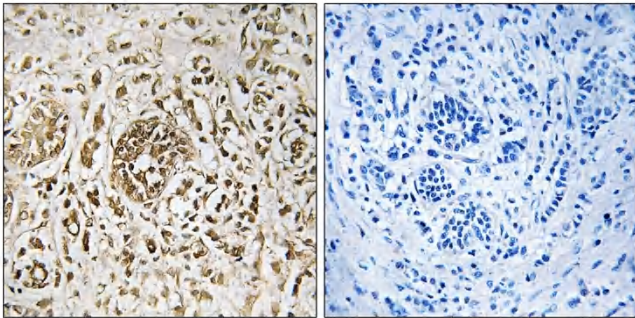
**matters needing attention**

Avoid repeated freezing and thawing!

Usage suggestions

This product can be used in immunological reaction related experiments. For more information, please consult technical personnel.

Products Images



Immunohistochemistry analysis of paraffin-embedded human breast carcinoma tissue, using CIB2 Antibody. The picture on the right is blocked with the synthesized peptide.