



Desmin Polyclonal Antibody

Catalog No	YP-Ab-03124
Isotype	IgG
Reactivity	Human;Mouse;Rat
Applications	WB;IHC;IF;ELISA
Gene Name	DES
Protein Name	Desmin
Immunogen	The antiserum was produced against synthesized peptide derived from human Desmin. AA range:421-470
Specificity	Desmin Polyclonal Antibody detects endogenous levels of Desmin protein.
Formulation	Liquid in PBS containing 50% glycerol, 0.5% BSA and 0.02% sodium azide.
Source	Polyclonal, Rabbit,IgG
Purification	The antibody was affinity-purified from rabbit antiserum by affinity-chromatography using epitope-specific immunogen.
Dilution	Western Blot: 1/500 - 1/2000. Immunohistochemistry: 1/100 - 1/300. Immunofluorescence: 1/200 - 1/1000. ELISA: 1/10000. Not yet tested in other applications.
Concentration	1 mg/ml
Purity	≥90%
Storage Stability	-20°C/1 year
Synonyms	DES; Desmin
Observed Band	55kD
Cell Pathway	Cytoplasmic
Tissue Specificity	Muscle,Skeletal muscle,
Function	disease:Defects in DES are the cause of cardiomyopathy dilated type 1I (CMD1I) [MIM:604765]. Dilated cardiomyopathy is a disorder characterized by ventricular dilation and impaired systolic function, resulting in congestive heart failure and arrhythmia. Patients are at risk of premature death.,disease:Defects in DES are the cause of desmin-related cardio-skeletal myopathy (CSM) [MIM:601419]; also known as desmin-related myopathy (DRM). CSM is characterized by skeletal muscle weakness associated with cardiac conduction blocks, arrhythmias, restrictive heart failure, and by intracytoplasmic accumulation of desmin-reactive deposits in cardiac and skeletal muscle cells. A desmin-related myopathy can have a distal onset, it is then known as hereditary distal myopathy (HDM).,disease:Defects in DES are the cause of neurogenic scapulo-peroneal syndrome Kaeser type (Kaeser syndrome) [MIM:181400].



Background

This gene encodes a muscle-specific class III intermediate filament. Homopolymers of this protein form a stable intracytoplasmic filamentous network connecting myofibrils to each other and to the plasma membrane. Mutations in this gene are associated with desmin-related myopathy, a familial cardiac and skeletal myopathy (CSM), and with distal myopathies. [provided by RefSeq, Jul 2008],

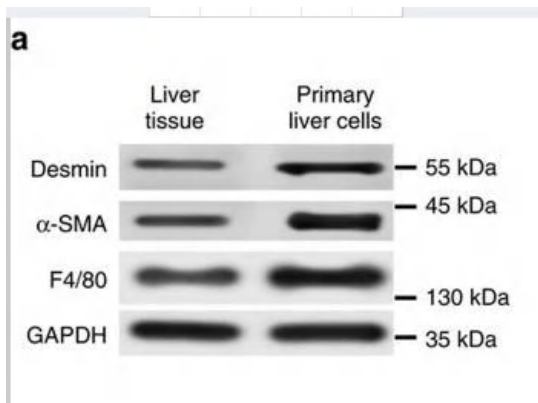
matters needing attention

Avoid repeated freezing and thawing!

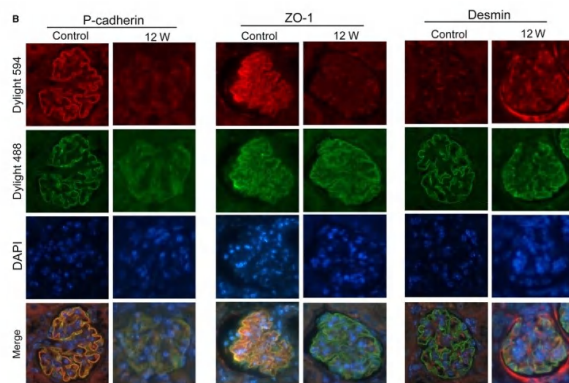
Usage suggestions

This product can be used in immunological reaction related experiments. For more information, please consult technical personnel.

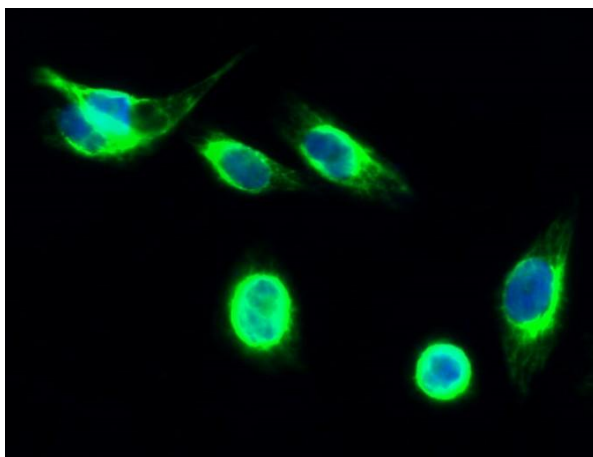
Products Images



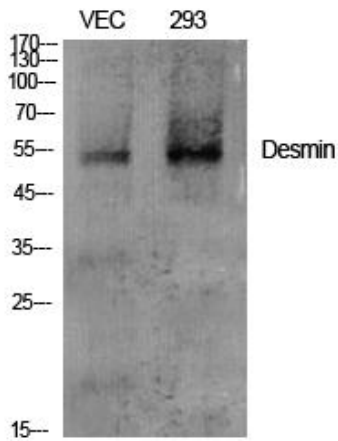
Zhang, Haiyang, et al. "Exosome-delivered EGFR regulates liver microenvironment to promote gastric cancer liver metastasis." *Nature communications* 8 (2017): 15016.



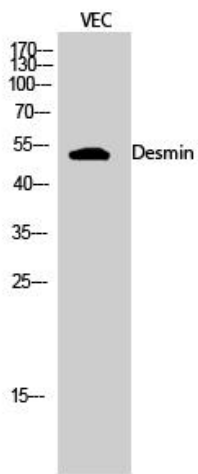
Hu, Mengsi, et al. "Lnc RNA MALAT 1 is dysregulated in diabetic nephropathy and involved in high glucose-induced podocyte injury via its interplay with β -catenin." *Journal of cellular and molecular medicine* 21.11 (2017): 2732-2747.



Immunofluorescence analysis of Hela cell. 1, Desmin Polyclonal Antibody (green) was diluted at 1:200 (4^o overnight). 2, Goat Anti Rabbit Alexa Fluor 488 Catalog:RS3211 was diluted at 1:1000 (room temperature, 50min). 3 DAPI (blue) 10min.



Western Blot analysis of various cells using Desmin Polyclonal Antibody diluted at 1:2000



Western Blot analysis of VEC cells using Desmin Polyclonal Antibody diluted at 1:2000