

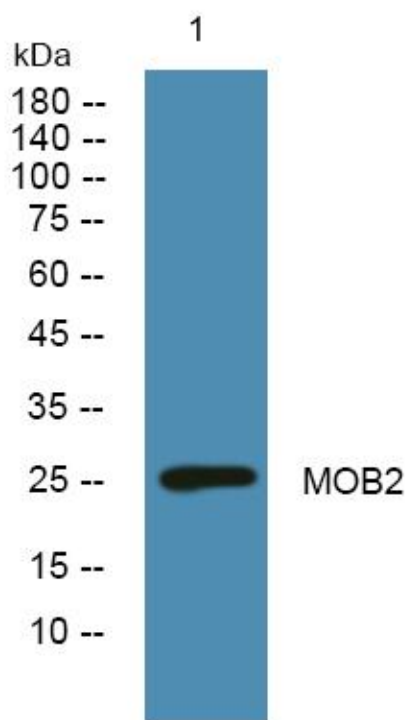


MOB2 Polyclonal Antibody

Catalog No	YP-Ab-05004
Isotype	IgG
Reactivity	Human;Mouse
Applications	WB;ELISA
Gene Name	MOB2 HCCA2
Protein Name	MOB kinase activator 2 (HCCA2) (Mob2 homolog) (Mps one binder kinase activator-like 2)
Immunogen	Synthesized peptide derived from human protein . at AA range: 10-90
Specificity	MOB2 Polyclonal Antibody detects endogenous levels of protein.
Formulation	Liquid in PBS containing 50% glycerol, and 0.02% sodium azide.
Source	Polyclonal, Rabbit,IgG
Purification	The antibody was affinity-purified from rabbit antiserum by affinity-chromatography using epitope-specific immunogen.
Dilution	WB 1:500-2000 ELISA 1:5000-20000
Concentration	1 mg/ml
Purity	≥90%
Storage Stability	-20°C/1 year
Synonyms	
Observed Band	26kD
Cell Pathway	Nucleus . Cytoplasm, perinuclear region .
Tissue Specificity	Brain,Testis,
Function	function:Stimulates the autophosphorylation and kinase activity of STK38 and STK38L.,PTM:Phosphorylated.,similarity:Belongs to the MOB1/phocein family.,subunit:Binds STK38 and STK38L.,
Background	function:Stimulates the autophosphorylation and kinase activity of STK38 and STK38L.,PTM:Phosphorylated.,similarity:Belongs to the MOB1/phocein family.,subunit:Binds STK38 and STK38L.,
matters needing attention	Avoid repeated freezing and thawing!
Usage suggestions	This product can be used in immunological reaction related experiments. For more information, please consult technical personnel.



Products Images



Western blot analysis of lysates from U2OS cells,
primary antibody was diluted at 1:1000, 4° over night