



RN141 Polyclonal Antibody

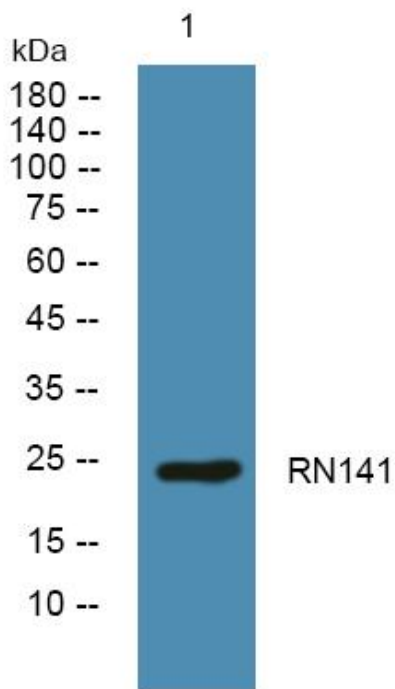
Catalog No	YP-Ab-05008
Isotype	IgG
Reactivity	Human;Mouse;Rat
Applications	WB;ELISA
Gene Name	RNF141 ZNF230
Protein Name	RING finger protein 141 (Zinc finger protein 230)
Immunogen	Synthesized peptide derived from human protein . at AA range: 150-230
Specificity	RN141 Polyclonal Antibody detects endogenous levels of protein.
Formulation	Liquid in PBS containing 50% glycerol, and 0.02% sodium azide.
Source	Polyclonal, Rabbit,IgG
Purification	The antibody was affinity-purified from rabbit antiserum by affinity-chromatography using epitope-specific immunogen.
Dilution	WB 1:500-2000 ELISA 1:5000-20000
Concentration	1 mg/ml
Purity	≥90%
Storage Stability	-20°C/1 year
Synonyms	
Observed Band	25kD
Cell Pathway	Membrane ; Lipid-anchor .
Tissue Specificity	Isoform 1 is testis-specific. Isoform 2 is expressed in heart, brain, skeletal muscle, kidney and pancreas. Isoform 1 is not expressed in fetus or in azoospermic patients.
Function	function:May be involved in spermatogenesis.,similarity:Contains 1 RING-type zinc finger.,tissue specificity:Isoform 1 is testis-specific. Isoform 2 is expressed in heart, brain, skeletal muscle, kidney and pancreas. Isoform 1 is not expressed in fetus or in azoospermic patients.,
Background	ring finger protein 141(RNF141) Homo sapiens The protein encoded by this gene contains a RING finger, a motif known to be involved in protein-DNA and protein-protein interactions. Abundant expression of this gene was found in the testicular tissue of fertile men, but was not detected in azoospermic patients. Studies of the mouse counterpart suggest that this gene may function as a testis specific transcription factor during spermatogenesis. [provided by RefSeq, Jul 2008],
matters needing attention	Avoid repeated freezing and thawing!



Usage suggestions

This product can be used in immunological reaction related experiments. For more information, please consult technical personnel.

Products Images



Western blot analysis of lysates from U2OS cells, primary antibody was diluted at 1:1000, 4° over night