



ABC3C Polyclonal Antibody

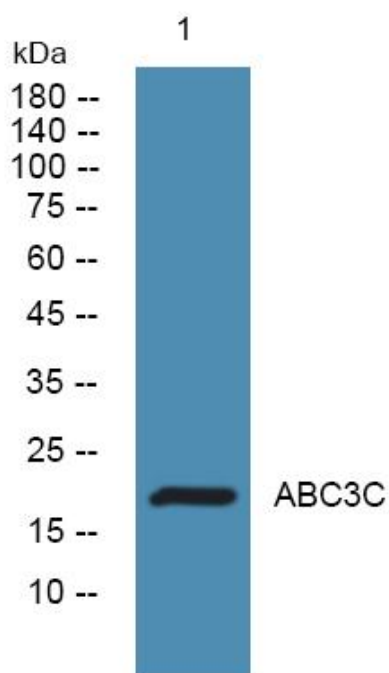
Catalog No	YP-Ab-05024
Isotype	IgG
Reactivity	Human;Rat;Mouse;
Applications	WB;ELISA
Gene Name	APOBEC3C APOBEC1L PBI
Protein Name	Probable DNA dC->dU-editing enzyme APOBEC-3C (EC 3.5.4.-) (APOBEC1-like) (Phorbolin I)
Immunogen	Synthesized peptide derived from human protein . at AA range: 10-90
Specificity	ABC3C Polyclonal Antibody detects endogenous levels of protein.
Formulation	Liquid in PBS containing 50% glycerol, and 0.02% sodium azide.
Source	Polyclonal, Rabbit,IgG
Purification	The antibody was affinity-purified from rabbit antiserum by affinity-chromatography using epitope-specific immunogen.
Dilution	WB 1:500-2000 ELISA 1:5000-20000
Concentration	1 mg/ml
Purity	≥90%
Storage Stability	-20°C/1 year
Synonyms	
Observed Band	20kD
Cell Pathway	Nucleus . Cytoplasm .
Tissue Specificity	Expressed in spleen, testes, peripheral blood lymphocytes, heart, thymus, prostate and ovary.
Function	cofactor:Zinc.,function:Unknown. Unable to reduce HIV-1 infectivity in vitro.,miscellaneous:It is one of seven related genes or pseudogenes found in a cluster, thought to result from gene duplication, on chromosome 22.,similarity:Belongs to the cytidine and deoxycytidylate deaminase family.,tissue specificity:Expressed in spleen, testes, peripheral blood lymphocytes, heart, thymus, prostate and ovary.,
Background	This gene is a member of the cytidine deaminase gene family. It is one of seven related genes or pseudogenes found in a cluster thought to result from gene duplication, on chromosome 22. Members of the cluster encode proteins that are structurally and functionally related to the C to U RNA-editing cytidine deaminase APOBEC1. It is thought that the proteins may be RNA editing enzymes and have roles in growth or cell cycle control. [provided by RefSeq, Jul 2008],
matters needing attention	Avoid repeated freezing and thawing!



Usage suggestions

This product can be used in immunological reaction related experiments. For more information, please consult technical personnel.

Products Images



Western blot analysis of lysates from K562 cells, primary antibody was diluted at 1:1000, 4° over night