

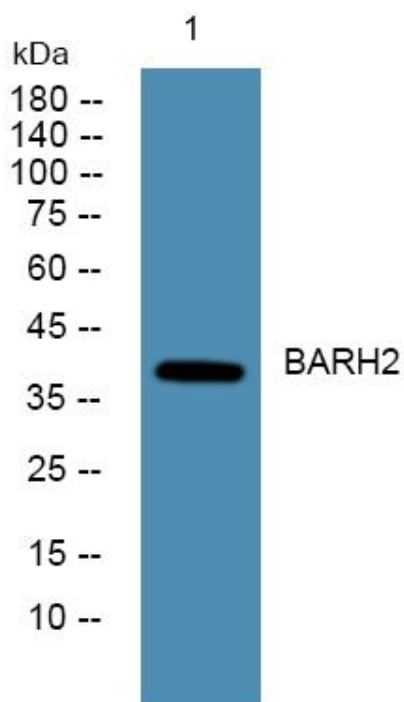


BARH2 Polyclonal Antibody

Catalog No	YP-Ab-05027
Isotype	IgG
Reactivity	Human;Mouse;Rat
Applications	WB;ELISA
Gene Name	BARHL2
Protein Name	BarH-like 2 homeobox protein
Immunogen	Synthesized peptide derived from human protein . at AA range: 140-220
Specificity	BARH2 Polyclonal Antibody detects endogenous levels of protein.
Formulation	Liquid in PBS containing 50% glycerol, and 0.02% sodium azide.
Source	Polyclonal, Rabbit,IgG
Purification	The antibody was affinity-purified from rabbit antiserum by affinity-chromatography using epitope-specific immunogen.
Dilution	WB 1:500-2000 ELISA 1:5000-20000
Concentration	1 mg/ml
Purity	≥90%
Storage Stability	-20°C/1 year
Synonyms	
Observed Band	42kD
Cell Pathway	Nucleus .
Tissue Specificity	
Function	function:Potential regulator of neural basic helix-loop-helix genes.,similarity:Belongs to the BAR homeobox family.,similarity:Contains 1 homeobox DNA-binding domain.,
Background	function:Potential regulator of neural basic helix-loop-helix genes.,similarity:Belongs to the BAR homeobox family.,similarity:Contains 1 homeobox DNA-binding domain.,
matters needing attention	Avoid repeated freezing and thawing!
Usage suggestions	This product can be used in immunological reaction related experiments. For more information, please consult technical personnel.



Products Images



Western blot analysis of lysates from SH-SY5Y cells, primary antibody was diluted at 1:1000, 4° over night