

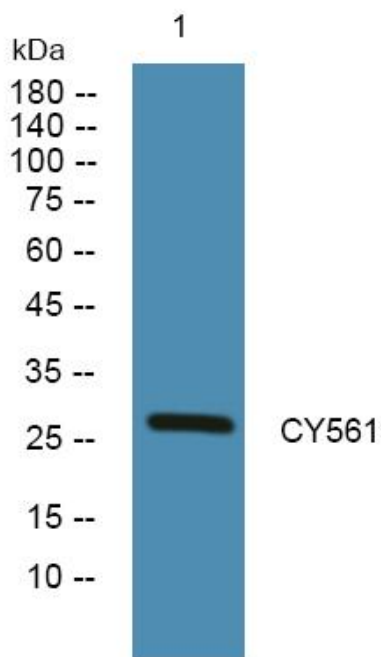


CY561 Polyclonal Antibody

Catalog No	YP-Ab-05066
Isotype	IgG
Reactivity	Human;Mouse
Applications	WB;ELISA
Gene Name	CYB561
Protein Name	Cytochrome b561 (Cytochrome b-561)
Immunogen	Synthesized peptide derived from human protein . at AA range: 30-110
Specificity	CY561 Polyclonal Antibody detects endogenous levels of protein.
Formulation	Liquid in PBS containing 50% glycerol, and 0.02% sodium azide.
Source	Polyclonal, Rabbit,IgG
Purification	The antibody was affinity-purified from rabbit antiserum by affinity-chromatography using epitope-specific immunogen.
Dilution	WB 1:500-2000 ELISA 1:5000-20000
Concentration	1 mg/ml
Purity	≥90%
Storage Stability	-20°C/1 year
Synonyms	
Observed Band	27kD
Cell Pathway	Cytoplasmic vesicle, secretory vesicle, chromaffin granule membrane ; Multi-pass membrane protein . Secretory vesicle containing catecholamines and amidated peptides. .
Tissue Specificity	Expressed in many tissues, in particular the brain especially in the cortex and hippocampus.
Function	cofactor: Binds 2 heme groups non-covalently.,function: Secretory vesicle-specific electron transport protein.,similarity: Contains 1 cytochrome b561 domain.,
Background	cofactor: Binds 2 heme groups non-covalently.,function: Secretory vesicle-specific electron transport protein.,similarity: Contains 1 cytochrome b561 domain.,
matters needing attention	Avoid repeated freezing and thawing!
Usage suggestions	This product can be used in immunological reaction related experiments. For more information, please consult technical personnel.



Products Images



Western blot analysis of lysates from U2OS cells,
primary antibody was diluted at 1:1000, 4° over night