



# FAT1 Polyclonal Antibody

<b>Catalog No</b>	YP-Ab-05071
<b>Isotype</b>	IgG
<b>Reactivity</b>	Human;Rat;Mouse;
<b>Applications</b>	IHC;IF
<b>Gene Name</b>	FAT1 CDHF7 FAT
<b>Protein Name</b>	Protocadherin Fat 1 (Cadherin family member 7) (Cadherin-related tumor suppressor homolog) (Protein fat homolog) [Cleaved into: Protocadherin Fat 1, nuclear form]
<b>Immunogen</b>	Synthesized peptide derived from human protein . at AA range: 1140-1220
<b>Specificity</b>	FAT1 Polyclonal Antibody detects endogenous levels of protein.
<b>Formulation</b>	Liquid in PBS containing 50% glycerol, and 0.02% sodium azide.
<b>Source</b>	Polyclonal, Rabbit,IgG
<b>Purification</b>	The antibody was affinity-purified from rabbit antiserum by affinity-chromatography using epitope-specific immunogen.
<b>Dilution</b>	IHC-p 1:50-300. IF 1:50-200
<b>Concentration</b>	1 mg/ml
<b>Purity</b>	≥90%
<b>Storage Stability</b>	-20°C/1 year
<b>Synonyms</b>	
<b>Observed Band</b>	504kD
<b>Cell Pathway</b>	[Protocadherin Fat 1]: Cell membrane ; Single-pass type I membrane protein . ; [Protocadherin Fat 1, nuclear form]: Nucleus .
<b>Tissue Specificity</b>	Expressed in many epithelial and some endothelial and smooth muscle cells.
<b>Function</b>	function:Could function as a cell-adhesion protein.,PTM:Phosphorylated upon DNA damage, probably by ATM or ATR.,similarity:Contains 1 laminin G-like domain.,similarity:Contains 34 cadherin domains.,similarity:Contains 5 EGF-like domains.,tissue specificity:Expressed in many epithelial and some endothelial and smooth muscle cells.,
<b>Background</b>	This gene is an ortholog of the Drosophila fat gene, which encodes a tumor suppressor essential for controlling cell proliferation during Drosophila development. The gene product is a member of the cadherin superfamily, a group of integral membrane proteins characterized by the presence of cadherin-type repeats. In addition to containing 34 tandem cadherin-type repeats, the gene product has five epidermal growth factor (EGF)-like repeats and one laminin A-G domain. This gene is expressed at high levels in a number of fetal epithelia. Its product probably functions as an adhesion molecule and/or signaling receptor, and is likely to be important in developmental processes and cell communication.



Transcript variants derived from alternative splicing and/or alternative promoter usage exist, but they have not been fully described. [provided by RefSeq, Jul 2008],

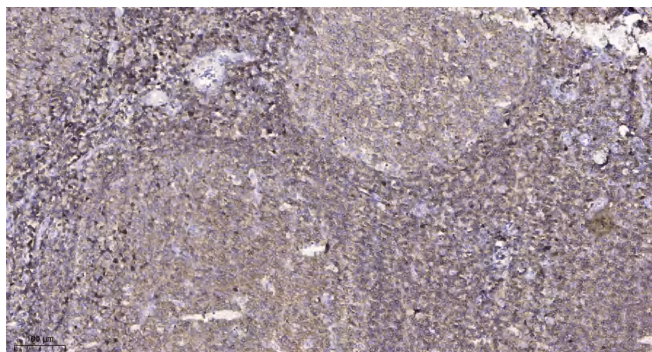
**matters needing attention**

Avoid repeated freezing and thawing!

**Usage suggestions**

This product can be used in immunological reaction related experiments. For more information, please consult technical personnel.

**Products Images**



Immunohistochemical analysis of paraffin-embedded human tonsil. 1, Antibody was diluted at 1:200(4° overnight). 2, Tris-EDTA,pH9.0 was used for antigen retrieval. 3,Secondary antibody was diluted at 1:200(room temperature, 45min).