

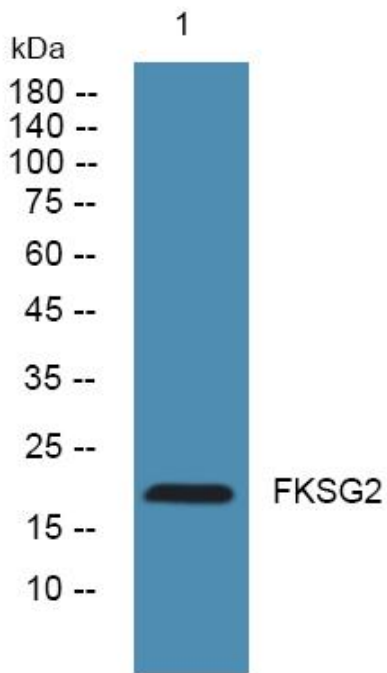


FKSG2 Polyclonal Antibody

Catalog No	YP-Ab-05075
Isotype	IgG
Reactivity	Human;Rat;Mouse;
Applications	WB;ELISA
Gene Name	FKSG2
Protein Name	Putative apoptosis inhibitor FKSG2
Immunogen	Synthesized peptide derived from human protein . at AA range: 40-120
Specificity	FKSG2 Polyclonal Antibody detects endogenous levels of protein.
Formulation	Liquid in PBS containing 50% glycerol, and 0.02% sodium azide.
Source	Polyclonal, Rabbit,IgG
Purification	The antibody was affinity-purified from rabbit antiserum by affinity-chromatography using epitope-specific immunogen.
Dilution	WB 1:500-2000 ELISA 1:5000-20000
Concentration	1 mg/ml
Purity	≥90%
Storage Stability	-20°C/1 year
Synonyms	
Observed Band	19kD
Cell Pathway	cytoplasm,
Tissue Specificity	
Function	caution:Could be the product of a pseudogene.,similarity:Belongs to the TCTP family.,
Background	caution:Could be the product of a pseudogene.,similarity:Belongs to the TCTP family.,
matters needing attention	Avoid repeated freezing and thawing!
Usage suggestions	This product can be used in immunological reaction related experiments. For more information, please consult technical personnel.



Products Images



Western blot analysis of lysates from HCT116 cells, primary antibody was diluted at 1:1000, 4° over night