

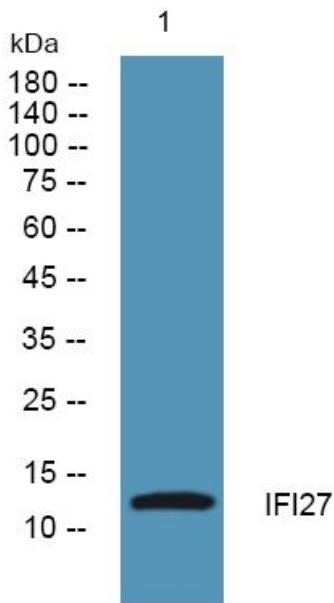


IFI27 Polyclonal Antibody

Catalog No	YP-Ab-05106
Isotype	IgG
Reactivity	Human;Rat;Mouse;
Applications	WB;ELISA
Gene Name	IFI27
Protein Name	Interferon alpha-inducible protein 27, mitochondrial (p27) (Interferon alpha-induced 11.5 kDa protein) (Interferon-stimulated gene 12a protein) (ISG12(a))
Immunogen	Synthesized peptide derived from human protein . at AA range: 1-80
Specificity	IFI27 Polyclonal Antibody detects endogenous levels of protein.
Formulation	Liquid in PBS containing 50% glycerol, and 0.02% sodium azide.
Source	Polyclonal, Rabbit,IgG
Purification	The antibody was affinity-purified from rabbit antiserum by affinity-chromatography using epitope-specific immunogen.
Dilution	WB 1:500-2000 ELISA 1:5000-20000
Concentration	1 mg/ml
Purity	≥90%
Storage Stability	-20°C/1 year
Synonyms	
Observed Band	13kD
Cell Pathway	Mitochondrion membrane ; Multi-pass membrane protein . Nucleus inner membrane ; Multi-pass membrane protein . Endoplasmic reticulum membrane ; Multi-pass membrane protein . Exclusive localizations in either the nucleus or the mitochondrion have been reported. .
Tissue Specificity	Cerebellum,Stomach,Uterus,
Function	induction:By alpha interferons.,similarity:Belongs to the IFI6/IFI27 family.,
Background	induction:By alpha interferons.,similarity:Belongs to the IFI6/IFI27 family.,
matters needing attention	Avoid repeated freezing and thawing!
Usage suggestions	This product can be used in immunological reaction related experiments. For more information, please consult technical personnel.



Products Images



Western blot analysis of lysates from HCT116 cells,
primary antibody was diluted at 1:1000, 4° over night