



# LTOR2 Polyclonal Antibody

<b>Catalog No</b>	YP-Ab-05136
<b>Isotype</b>	IgG
<b>Reactivity</b>	Human;Mouse
<b>Applications</b>	WB;ELISA
<b>Gene Name</b>	LAMTOR2 MAPBPIP ROBLD3 HSPC003
<b>Protein Name</b>	Ragulator complex protein LAMTOR2 (Endosomal adaptor protein p14) (Late endosomal/lysosomal Mp1-interacting protein) (Late endosomal/lysosomal adaptor and MAPK and MTOR activator 2) (Mitogen-activated
<b>Immunogen</b>	Synthesized peptide derived from human protein . at AA range: 10-90
<b>Specificity</b>	LTOR2 Polyclonal Antibody detects endogenous levels of protein.
<b>Formulation</b>	Liquid in PBS containing 50% glycerol, and 0.02% sodium azide.
<b>Source</b>	Polyclonal, Rabbit,IgG
<b>Purification</b>	The antibody was affinity-purified from rabbit antiserum by affinity-chromatography using epitope-specific immunogen.
<b>Dilution</b>	WB 1:500-2000 ELISA 1:5000-20000
<b>Concentration</b>	1 mg/ml
<b>Purity</b>	≥90%
<b>Storage Stability</b>	-20°C/1 year
<b>Synonyms</b>	
<b>Observed Band</b>	13kD
<b>Cell Pathway</b>	Late endosome membrane ; Peripheral membrane protein ; Cytoplasmic side . Lysosome membrane ; Peripheral membrane protein ; Cytoplasmic side .
<b>Tissue Specificity</b>	Lung,Umbilical cord blood,
<b>Function</b>	disease:Defects in ROBLD3 are the cause of immunodeficiency due to defect in MAPBP-interacting protein [MIM:610798]. This form of primary immunodeficiency syndrome includes congenital neutropenia, partial albinism, short stature and B-cell and cytotoxic T-cell deficiency.,function:Adapter protein that enhances the efficiency of the MAP kinase cascade. Facilitates the activation of MAPK2.,online information:ROBLD3 mutation db,similarity:Belongs to the GAMAD family.,subunit:Heterodimer with MAP2K1P1. Interacts with MAPK1 and MAP2K1.,
<b>Background</b>	The product of this gene is highly conserved with a mouse protein associated with the cytoplasmic face of late endosomes and lysosomes. The mouse protein interacts with MAPK scaffold protein 1, a component of the mitogen-activated protein kinase pathway. In humans, a mutation in this gene has been associated with a primary immunodeficiency syndrome, and suggests a role for this protein in endosomal biogenesis. Multiple transcript variants encoding different isoforms



have been found for this gene. [provided by RefSeq, Feb 2009],

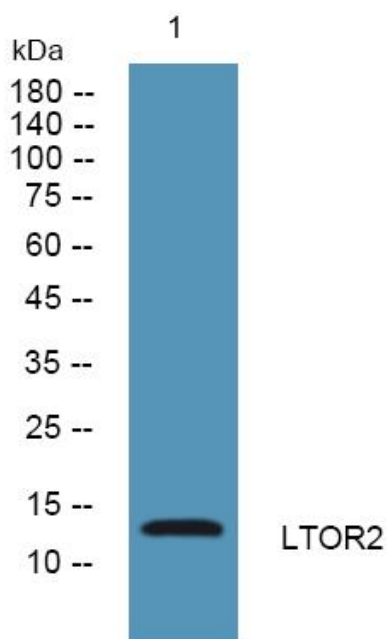
**matters needing attention**

Avoid repeated freezing and thawing!

**Usage suggestions**

This product can be used in immunological reaction related experiments. For more information, please consult technical personnel.

**Products Images**



Western blot analysis of lysates from U2OS cells, primary antibody was diluted at 1:1000, 4° over night