

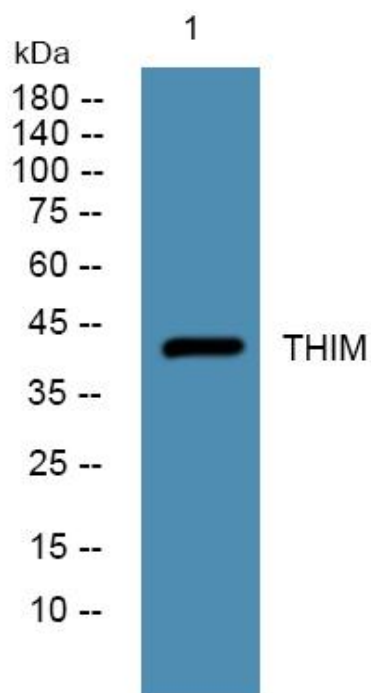


THIM Polyclonal Antibody

Catalog No	YP-Ab-05184
Isotype	IgG
Reactivity	Human;Rat;Mouse;
Applications	WB;ELISA
Gene Name	ACAA2
Protein Name	3-ketoacyl-CoA thiolase, mitochondrial (EC 2.3.1.16) (Acetyl-CoA acyltransferase) (Beta-ketothiolase) (Mitochondrial 3-oxoacyl-CoA thiolase) (T1)
Immunogen	Synthesized peptide derived from human protein . at AA range: 110-190
Specificity	THIM Polyclonal Antibody detects endogenous levels of protein.
Formulation	Liquid in PBS containing 50% glycerol, and 0.02% sodium azide.
Source	Polyclonal, Rabbit,IgG
Purification	The antibody was affinity-purified from rabbit antiserum by affinity-chromatography using epitope-specific immunogen.
Dilution	WB 1:500-2000 ELISA 1:5000-20000
Concentration	1 mg/ml
Purity	≥90%
Storage Stability	-20°C/1 year
Synonyms	
Observed Band	43kD
Cell Pathway	Mitochondrion .
Tissue Specificity	Adipocyte,Liver,Lung,
Function	catalytic activity:Acyl-CoA + acetyl-CoA = CoA + 3-oxoacyl-CoA.,pathway:Lipid metabolism; fatty acid metabolism.,similarity:Belongs to the thiolase family.,subunit:Homotetramer.,
Background	The encoded protein catalyzes the last step of the mitochondrial fatty acid beta-oxidation spiral. Unlike most mitochondrial matrix proteins, it contains a non-cleavable amino-terminal targeting signal. [provided by RefSeq, Jul 2008],
matters needing attention	Avoid repeated freezing and thawing!
Usage suggestions	This product can be used in immunological reaction related experiments. For more information, please consult technical personnel.



Products Images



Western blot analysis of lysates from DU145 cells,
primary antibody was diluted at 1:1000, 4° over night