



IKBL1 Polyclonal Antibody

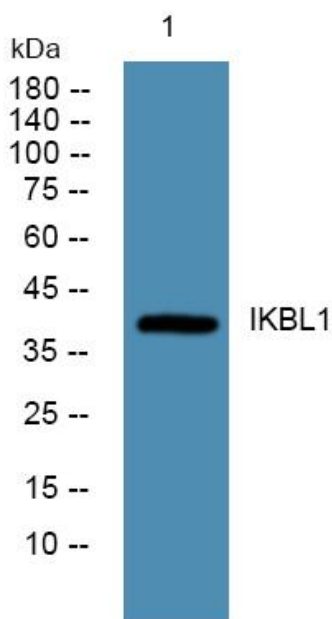
Catalog No	YP-Ab-05189
Isotype	IgG
Reactivity	Human;Mouse;Rat
Applications	WB;ELISA
Gene Name	NFKBIL1 IKBL
Protein Name	NF-kappa-B inhibitor-like protein 1 (Inhibitor of kappa B-like protein) (I-kappa-B-like protein) (IkappaBL) (Nuclear factor of kappa light polypeptide gene enhancer in B-cells inhibitor-like 1)
Immunogen	Synthesized peptide derived from human protein . at AA range: 70-150
Specificity	IKBL1 Polyclonal Antibody detects endogenous levels of protein.
Formulation	Liquid in PBS containing 50% glycerol, and 0.02% sodium azide.
Source	Polyclonal, Rabbit,IgG
Purification	The antibody was affinity-purified from rabbit antiserum by affinity-chromatography using epitope-specific immunogen.
Dilution	WB 1:500-2000 ELISA 1:5000-20000
Concentration	1 mg/ml
Purity	≥90%
Storage Stability	-20°C/1 year
Synonyms	
Observed Band	41kD
Cell Pathway	Nucleus . Nuclear localization with a speckled expression pattern in some cells. Colocalizes with CACTIN in the nucleus.
Tissue Specificity	Detected in different cell types including monocytes, T-cells, B-cells and hepatocytes.
Function	disease:Mutations in the promoter region of NFKBIL1 represent the second rheumatoid arthritis susceptibility locus within the HLA region [MIM:180300].,function:May be a negative regulator of NF-kappa-B activation.,similarity:Contains 2 ANK repeats.,tissue specificity:Detected in different cell types including monocytes, T-cells, B-cells and hepatocytes.,
Background	This gene encodes a divergent member of the I-kappa-B family of proteins. Its function has not been determined. The gene lies within the major histocompatibility complex (MHC) class I region on chromosome 6. Multiple transcript variants encoding different isoforms have been found for this gene. [provided by RefSeq, Jan 2009],
matters needing attention	Avoid repeated freezing and thawing!



Usage suggestions

This product can be used in immunological reaction related experiments. For more information, please consult technical personnel.

Products Images



Western blot analysis of lysates from HCT116 cells, primary antibody was diluted at 1:1000, 4° over night