

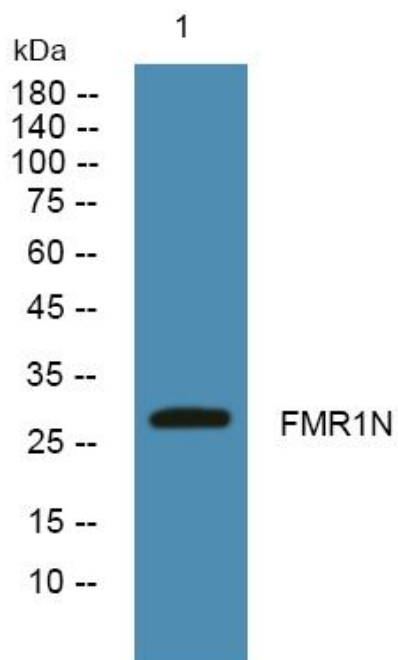


FMR1N Polyclonal Antibody

Catalog No	YP-Ab-05208
Isotype	IgG
Reactivity	Human;Rat;Mouse;
Applications	WB;ELISA
Gene Name	FMR1NB
Protein Name	Fragile X mental retardation 1 neighbor protein (Cancer/testis antigen 37) (CT37) (Sarcoma antigen NY-SAR-35)
Immunogen	Synthesized peptide derived from human protein . at AA range: 180-260
Specificity	FMR1N Polyclonal Antibody detects endogenous levels of protein.
Formulation	Liquid in PBS containing 50% glycerol, and 0.02% sodium azide.
Source	Polyclonal, Rabbit,IgG
Purification	The antibody was affinity-purified from rabbit antiserum by affinity-chromatography using epitope-specific immunogen.
Dilution	WB 1:500-2000 ELISA 1:5000-20000
Concentration	1 mg/ml
Purity	≥90%
Storage Stability	-20°C/1 year
Synonyms	
Observed Band	28kD
Cell Pathway	Membrane ; Multi-pass membrane protein .
Tissue Specificity	Testis-specific. Expressed in melanoma, sarcoma, lung, breast, bladder, esophageal and ovarian cancers.
Function	similarity:Contains 1 P-type (trefoil) domain.,tissue specificity:Testis-specific. Expressed in melanoma, sarcoma, lung, breast, bladder, esophageal and ovarian cancers.,
Background	similarity:Contains 1 P-type (trefoil) domain.,tissue specificity:Testis-specific. Expressed in melanoma, sarcoma, lung, breast, bladder, esophageal and ovarian cancers.,
matters needing attention	Avoid repeated freezing and thawing!
Usage suggestions	This product can be used in immunological reaction related experiments. For more information, please consult technical personnel.



Products Images



Western blot analysis of lysates from Jarkat cells,
primary antibody was diluted at 1:1000, 4° over night