

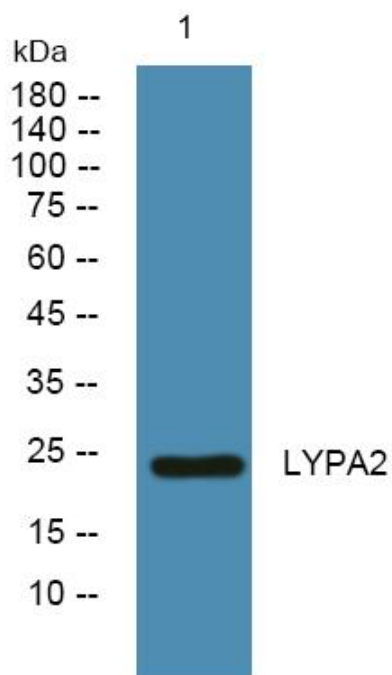


LYPA2 Polyclonal Antibody

| | |
|----------------------------------|-----------------------------------------------------------------------------------------------------------------------------------------------------------------------------------------------------------------------------------------------------------------------------------|
| Catalog No | YP-Ab-05278 |
| Isotype | IgG |
| Reactivity | Human;Mouse;Rat |
| Applications | WB;ELISA |
| Gene Name | LYPLA2 APT2 |
| Protein Name | Acyl-protein thioesterase 2 (APT-2) (EC 3.1.2.-) (Lysophospholipase II) (LPL-II) (LysoPLA II) |
| Immunogen | Synthesized peptide derived from human protein . at AA range: 30-110 |
| Specificity | LYPA2 Polyclonal Antibody detects endogenous levels of protein. |
| Formulation | Liquid in PBS containing 50% glycerol, and 0.02% sodium azide. |
| Source | Polyclonal, Rabbit,IgG |
| Purification | The antibody was affinity-purified from rabbit antiserum by affinity-chromatography using epitope-specific immunogen. |
| Dilution | WB 1:500-2000 ELISA 1:5000-20000 |
| Concentration | 1 mg/ml |
| Purity | ≥90% |
| Storage Stability | -20°C/1 year |
| Synonyms | |
| Observed Band | 25kD |
| Cell Pathway | Cytoplasm . |
| Tissue Specificity | Expressed in various breast cancer cell lines. |
| Function | catalytic activity:Palmitoyl-protein + H(2)O = palmitate + protein.,function:May hydrolyze fatty acids from S-acylated cysteine residues in proteins such as trimeric G alpha proteins or HRAS. Has lysophospholipase activity.,similarity:Belongs to the AB hydrolase 2 family., |
| Background | Lysophospholipases are enzymes that act on biological membranes to regulate the multifunctional lysophospholipids. There are alternatively spliced transcript variants described for this gene but the full length nature is not known yet. [provided by RefSeq, Jul 2008], |
| matters needing attention | Avoid repeated freezing and thawing! |
| Usage suggestions | This product can be used in immunological reaction related experiments. For more information, please consult technical personnel. |



Products Images



Western blot analysis of lysates from PC12 cells,
primary antibody was diluted at 1:1000, 4° over night