



ATS20 Polyclonal Antibody

| | |
|---------------------------|---|
| Catalog No | YP-Ab-05289 |
| Isotype | IgG |
| Reactivity | Human;Rat;Mouse; |
| Applications | WB;ELISA |
| Gene Name | ADAMTS20 |
| Protein Name | A disintegrin and metalloproteinase with thrombospondin motifs 20 (ADAM-TS 20) (ADAM-TS20) (ADAMTS-20) (EC 3.4.24.-) |
| Immunogen | Synthesized peptide derived from human protein . at AA range: 190-270 |
| Specificity | ATS20 Polyclonal Antibody detects endogenous levels of protein. |
| Formulation | Liquid in PBS containing 50% glycerol, and 0.02% sodium azide. |
| Source | Polyclonal, Rabbit,IgG |
| Purification | The antibody was affinity-purified from rabbit antiserum by affinity-chromatography using epitope-specific immunogen. |
| Dilution | WB 1:500-2000 ELISA 1:5000-20000 |
| Concentration | 1 mg/ml |
| Purity | ≥90% |
| Storage Stability | -20°C/1 year |
| Synonyms | |
| Observed Band | 210kD |
| Cell Pathway | Secreted, extracellular space, extracellular matrix . |
| Tissue Specificity | Very sparingly expressed, although is detected at low levels in testis, prostate, ovary, heart, placenta, lung and pancreas. Overexpressed in several brain, colon and breast carcinomas. |
| Function | cofactor: Binds 1 zinc ion per subunit.,function: May play a role in tissue-remodeling process occurring in both normal and pathological conditions.,PTM: The precursor is cleaved by a furin endopeptidase.,similarity: Contains 1 disintegrin domain.,similarity: Contains 1 GON domain.,similarity: Contains 1 peptidase M12B domain.,similarity: Contains 15 TSP type-1 domains.,tissue specificity: Very sparingly expressed, although is detected at low levels in testis, prostate, ovary, heart, placenta, lung and pancreas. Overexpressed in several brain, colon and breast carcinomas., |
| Background | The protein encoded by this gene is a member of the ADAMTS family of zinc-dependent proteases. The encoded protein has a signal peptide that is cleaved to release the mature peptide, which is secreted and found in the extracellular matrix. This protein may be involved in tissue remodeling. [provided by RefSeq, Sep 2011], |



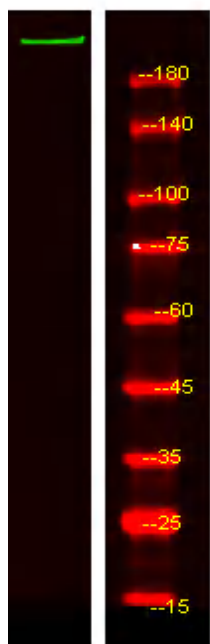
matters needing attention

Avoid repeated freezing and thawing!

Usage suggestions

This product can be used in immunological reaction related experiments. For more information, please consult technical personnel.

Products Images



Western Blot analysis of HEK293 lysis, using primary antibody at 1:1000 dilution. Secondary antibody(catalog#:RS23920) was diluted at 1:10000