



A1AG1 Polyclonal Antibody

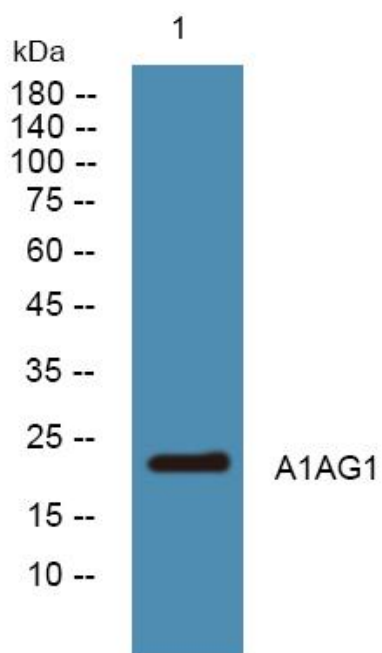
Catalog No	YP-Ab-05305
Isotype	IgG
Reactivity	Human;Rat;Mouse;
Applications	WB;ELISA
Gene Name	ORM1 AGP1
Protein Name	Alpha-1-acid glycoprotein 1 (AGP 1) (Orosomuroid-1) (OMD 1)
Immunogen	Synthesized peptide derived from human protein . at AA range: 30-110
Specificity	A1AG1 Polyclonal Antibody detects endogenous levels of protein.
Formulation	Liquid in PBS containing 50% glycerol, and 0.02% sodium azide.
Source	Polyclonal, Rabbit,IgG
Purification	The antibody was affinity-purified from rabbit antiserum by affinity-chromatography using epitope-specific immunogen.
Dilution	WB 1:500-2000 ELISA 1:5000-20000
Concentration	1 mg/ml
Purity	≥90%
Storage Stability	-20°C/1 year
Synonyms	
Observed Band	22kD
Cell Pathway	Secreted.
Tissue Specificity	Expressed by the liver and secreted in plasma.
Function	function:Appears to function in modulating the activity of the immune system during the acute-phase reaction.,induction:Synthesis is controlled by glucocorticoids, interleukin-1 and interleukin-6, It increases 5- to 50-fold upon inflammation.,polymorphism:Three common alleles of ORM1 are known. ORM1*F1 has Gln-38/Val-174; ORM1*F2 has Gln-38/Met-174 and ORM1*S has Arg-38/Val-174. The sequence shown is that of allele ORM1*F1.,similarity:Belongs to the calycin superfamily. Lipocalin family.,tissue specificity:Expressed by the liver and secreted in plasma.,
Background	This gene encodes a key acute phase plasma protein. Because of its increase due to acute inflammation, this protein is classified as an acute-phase reactant. The specific function of this protein has not yet been determined; however, it may be involved in aspects of immunosuppression. [provided by RefSeq, Jul 2008],
matters needing attention	Avoid repeated freezing and thawing!



Usage suggestions

This product can be used in immunological reaction related experiments. For more information, please consult technical personnel.

Products Images



Western blot analysis of lysates from K562 cells, primary antibody was diluted at 1:1000, 4° over night