



A1ATR Polyclonal Antibody

Catalog No	YP-Ab-05307
Isotype	IgG
Reactivity	Human;Rat;Mouse;
Applications	WB;ELISA
Gene Name	SERPINA2 ARGS ATR PIL
Protein Name	Putative alpha-1-antitrypsin-related protein (Serpins A2)
Immunogen	Synthesized peptide derived from human protein . at AA range: 110-190
Specificity	A1ATR Polyclonal Antibody detects endogenous levels of protein.
Formulation	Liquid in PBS containing 50% glycerol, and 0.02% sodium azide.
Source	Polyclonal, Rabbit,IgG
Purification	The antibody was affinity-purified from rabbit antiserum by affinity-chromatography using epitope-specific immunogen.
Dilution	WB 1:500-2000 ELISA 1:5000-20000
Concentration	1 mg/ml
Purity	≥90%
Storage Stability	-20°C/1 year
Synonyms	
Observed Band	46kD
Cell Pathway	Endoplasmic reticulum .
Tissue Specificity	Expressed in the liver, leukocytes and testis. Also detected in brain, colon, uterus, esophagus, spleen, trachea, kidney and lung.
Function	caution:Could be the product of a pseudogene.,domain:The reactive center loop (RCL) extends out from the body of the protein and directs binding to the target protease. The protease cleaves the serpin at the reactive site within the RCL, establishing a covalent linkage between the carboxyl group of the serpin reactive site and the serine hydroxyl of the protease. The resulting inactive serpin-protease complex is highly stable.,function:Could be a serine protease inhibitor.,similarity:Belongs to the serpin family.,
Background	This gene encodes a member of the serpin family of proteins, a group of proteins that inhibit serine proteases. The encoded intracellular glycoprotein is localized at the endoplasmic reticulum. This gene is a polymorphic pseudogene, with the non-functional allele being predominant in some populations. Some individuals, as represented by the reference genome allele, contain a 2kb coding region deletion and a start code mutation. [provided by RefSeq, Feb 2014],



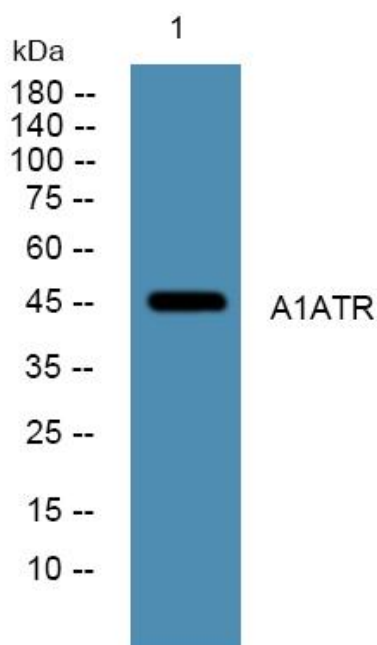
matters needing attention

Avoid repeated freezing and thawing!

Usage suggestions

This product can be used in immunological reaction related experiments. For more information, please consult technical personnel.

Products Images



Western blot analysis of lysates from A431 cells, primary antibody was diluted at 1:1000, 4° over night