



AXIN1 Polyclonal Antibody

Catalog No	YP-Ab-05368
Isotype	IgG
Reactivity	Human;Mouse;Rat
Applications	WB;IHC
Gene Name	AXIN1 AXIN
Protein Name	Axin-1 (Axis inhibition protein 1) (hAxin)
Immunogen	Synthesized peptide derived from human protein . at AA range: 190-270
Specificity	AXIN1 Polyclonal Antibody detects endogenous levels of protein.
Formulation	Liquid in PBS containing 50% glycerol, and 0.02% sodium azide.
Source	Polyclonal, Rabbit,IgG
Purification	The antibody was affinity-purified from rabbit antiserum by affinity-chromatography using epitope-specific immunogen.
Dilution	WB 1:500-2000 ELISA 1:5000-20000
Concentration	1 mg/ml
Purity	≥90%
Storage Stability	-20°C/1 year
Synonyms	
Observed Band	94kD
Cell Pathway	Cytoplasm . Nucleus . Membrane . Cell membrane . MACF1 is required for its translocation to cell membrane (By similarity). On UV irradiation, translocates to the nucleus and colocalizes with DAAX (PubMed:17210684). .
Tissue Specificity	Ubiquitously expressed.
Function	disease:Defects in AXIN1 are involved in hepatocellular carcinoma (HCC) [MIM:114550].,disease:Hypermethylation of the AXIN1 promoter may be associated with caudal duplication anomaly [MIM:607864]. Caudal duplication anomaly is characterized by the occurrence of duplications of different organs in the caudal region.,function:Controls dorsoventral patterning via two opposing effects; down-regulates beta-catenin to inhibit the Wnt signaling pathway and ventralize embryos, but also dorsalizes embryos by activating a Wnt-independent JNK signaling pathway. In Wnt signaling, probably facilitates the phosphorylation of beta-catenin and APC by GSK3B. Likely to function as a tumor suppressor. Facilitates the phosphorylation of TP53 by HIPK2 upon ultraviolet irradiation. Wild-type axin 1 can induce apoptosis in hepatocellular and colorectal cancer cells. Enhances TGF-beta signaling by recruiting th
Background	This gene encodes a cytoplasmic protein which contains a regulation of G-protein signaling (RGS) domain and a dishevelled and axin (DIX) domain. The



encoded protein interacts with adenomatosis polyposis coli, catenin beta-1, glycogen synthase kinase 3 beta, protein phosphate 2, and itself. This protein functions as a negative regulator of the wingless-type MMTV integration site family, member 1 (WNT) signaling pathway and can induce apoptosis. The crystal structure of a portion of this protein, alone and in a complex with other proteins, has been resolved. Mutations in this gene have been associated with hepatocellular carcinoma, hepatoblastomas, ovarian endometriod adenocarcinomas, and medullablastomas. Alternative splicing results in multiple transcript variants. [provided by RefSeq, Jan 2016],

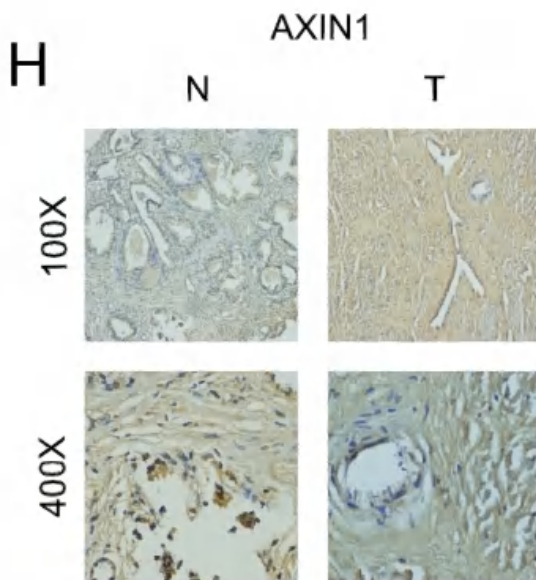
matters needing attention

Avoid repeated freezing and thawing!

Usage suggestions

This product can be used in immunological reaction related experiments. For more information, please consult technical personnel.

Products Images



A Liquid–Liquid Phase Separation-Related Index Associate with Biochemical Recurrence and Tumor Immune Environment of Prostate Cancer Patients INTERNATIONAL JOURNAL OF MOLECULAR SCIENCES Qi You, Jia-Yin Chen, Xiao-Hui Wu, Yu-Ting Xue, Jiang-Bo Sun, Yong Wei, Qing-Shui Zheng, Xue-Yi Xue, Dong-Ning Chen, Ning Xu IHC Human benign prostatic hyperplasia (BPH) tissue prostate cancer (PCa)cell