



BSSP4 Polyclonal Antibody

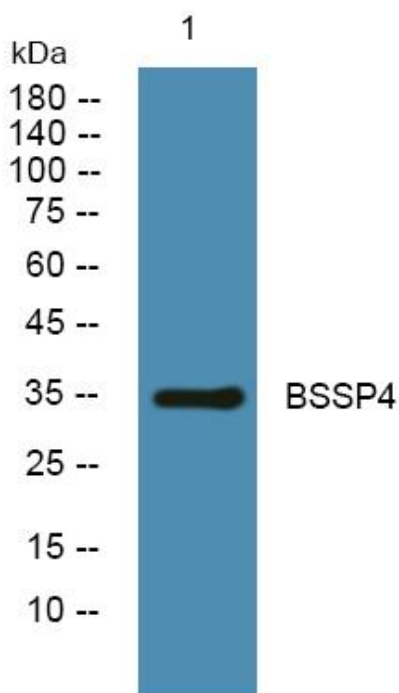
Catalog No	YP-Ab-05387
Isotype	IgG
Reactivity	Human;Rat;Mouse;
Applications	WB;ELISA
Gene Name	PRSS22 BSSP4 PRSS26 SP001LA UNQ302/PRO343
Protein Name	Brain-specific serine protease 4 (BSSP-4) (EC 3.4.21.-) (Serine protease 22) (Serine protease 26) (Trypsin epsilon)
Immunogen	Synthesized peptide derived from part region of human protein
Specificity	BSSP4 Polyclonal Antibody detects endogenous levels of protein.
Formulation	Liquid in PBS containing 50% glycerol, and 0.02% sodium azide.
Source	Polyclonal, Rabbit,IgG
Purification	The antibody was affinity-purified from rabbit antiserum by affinity-chromatography using epitope-specific immunogen.
Dilution	WB 1:500-2000 ELISA 1:5000-20000
Concentration	1 mg/ml
Purity	≥90%
Storage Stability	-20°C/1 year
Synonyms	
Observed Band	34kD
Cell Pathway	Secreted .
Tissue Specificity	Expressed abundantly in the epithelial cells of the airways, including trachea, esophagus and fetal lung. Scarce in adult lung. Expressed at low levels in placenta, pancreas, prostate and thyroid gland.
Function	function:Preferentially cleaves the synthetic substrate H-D-Leu-Thr-Arg-pNA compared to tosyl-Gly-Pro-Arg-pNA.,similarity:Belongs to the peptidase S1 family.,similarity:Contains 1 peptidase S1 domain.,tissue specificity:Expressed abundantly in the epithelial cells of the airways, including trachea, esophagus and fetal lung. Scarce in adult lung. Expressed at low levels in placenta, pancreas, prostate and thyroid gland.,
Background	This gene encodes a member of the trypsin family of serine proteases. The enzyme is expressed in the airways in a developmentally regulated manner. The gene is part of a cluster of serine protease genes on chromosome 16. [provided by RefSeq, Jul 2008],
matters needing attention	Avoid repeated freezing and thawing!



Usage suggestions

This product can be used in immunological reaction related experiments. For more information, please consult technical personnel.

Products Images



Western blot analysis of lysates from KB cells, primary antibody was diluted at 1:1000, 4° over night