



# CANB2 Polyclonal Antibody

<b>Catalog No</b>	YP-Ab-05389
<b>Isotype</b>	IgG
<b>Reactivity</b>	Human;Rat
<b>Applications</b>	WB;ELISA
<b>Gene Name</b>	PPP3R2 CBLP PPP3RL
<b>Protein Name</b>	Calcineurin subunit B type 2 (Calcineurin B-like protein) (CBLP) (Calcineurin BII) (CNBII) (PPP3R1-like) (Protein phosphatase 2B regulatory subunit 2) (Protein phosphatase 3 regulatory subunit B beta
<b>Immunogen</b>	Synthesized peptide derived from part region of human protein
<b>Specificity</b>	CANB2 Polyclonal Antibody detects endogenous levels of protein.
<b>Formulation</b>	Liquid in PBS containing 50% glycerol, and 0.02% sodium azide.
<b>Source</b>	Polyclonal, Rabbit,IgG
<b>Purification</b>	The antibody was affinity-purified from rabbit antiserum by affinity-chromatography using epitope-specific immunogen.
<b>Dilution</b>	WB 1:500-2000 ELISA 1:5000-20000
<b>Concentration</b>	1 mg/ml
<b>Purity</b>	≥90%
<b>Storage Stability</b>	-20°C/1 year
<b>Synonyms</b>	
<b>Observed Band</b>	18kD
<b>Cell Pathway</b>	Mitochondrion . Localizes in the mitochondria in a SPATA33-dependent manner. .
<b>Tissue Specificity</b>	Testis-specific.
<b>Function</b>	function:Regulatory subunit of calcineurin, a calcium-dependent, calmodulin stimulated protein phosphatase. Confers calcium sensitivity.,miscellaneous:This protein has four functional calcium-binding sites.,similarity:Belongs to the calcineurin regulatory subunit family.,similarity:Contains 4 EF-hand domains.,subunit:Composed of a catalytic subunit (A) and a regulatory subunit (B).,tissue specificity:Testis specific.,
<b>Background</b>	function:Regulatory subunit of calcineurin, a calcium-dependent, calmodulin stimulated protein phosphatase. Confers calcium sensitivity.,miscellaneous:This protein has four functional calcium-binding sites.,similarity:Belongs to the calcineurin regulatory subunit family.,similarity:Contains 4 EF-hand domains.,subunit:Composed of a catalytic subunit (A) and a regulatory subunit (B).,tissue specificity:Testis specific.,



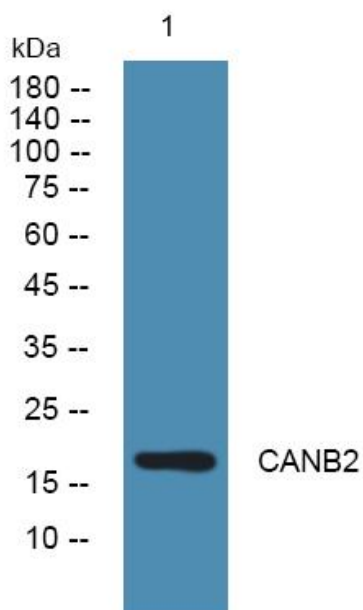
**matters needing attention**

Avoid repeated freezing and thawing!

**Usage suggestions**

This product can be used in immunological reaction related experiments. For more information, please consult technical personnel.

**Products Images**



Western blot analysis of lysates from KB cells, primary antibody was diluted at 1:1000, 4°over night