

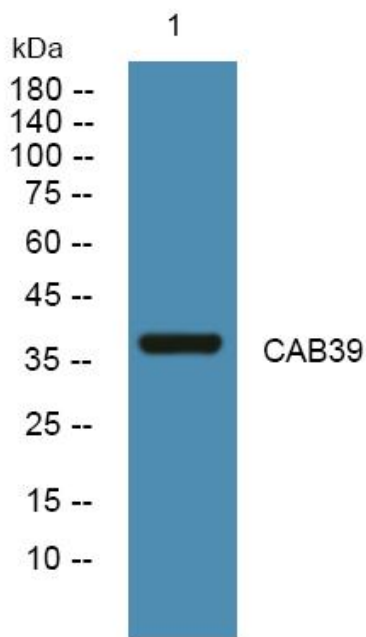


# CAB39 Polyclonal Antibody

<b>Catalog No</b>	YP-Ab-05399
<b>Isotype</b>	IgG
<b>Reactivity</b>	Human;Mouse
<b>Applications</b>	WB;ELISA
<b>Gene Name</b>	CAB39 MO25 CGI-66
<b>Protein Name</b>	Calcium-binding protein 39 (MO25alpha) (Protein Mo25)
<b>Immunogen</b>	Synthesized peptide derived from part region of human protein
<b>Specificity</b>	CAB39 Polyclonal Antibody detects endogenous levels of protein.
<b>Formulation</b>	Liquid in PBS containing 50% glycerol, and 0.02% sodium azide.
<b>Source</b>	Polyclonal, Rabbit,IgG
<b>Purification</b>	The antibody was affinity-purified from rabbit antiserum by affinity-chromatography using epitope-specific immunogen.
<b>Dilution</b>	WB 1:500-2000 ELISA 1:5000-20000
<b>Concentration</b>	1 mg/ml
<b>Purity</b>	≥90%
<b>Storage Stability</b>	-20°C/1 year
<b>Synonyms</b>	
<b>Observed Band</b>	37kD
<b>Cell Pathway</b>	Cytoplasm .
<b>Tissue Specificity</b>	Duodenum,Hypothalamus,Testis,
<b>Function</b>	function:Together with the STE20-related adaptor-alpha (STRAD alpha) pseudo kinase, forms a regulatory complex capable of stimulating the activity of STK11.,similarity:Belongs to the Mo25 family.,
<b>Background</b>	function:Together with the STE20-related adaptor-alpha (STRAD alpha) pseudo kinase, forms a regulatory complex capable of stimulating the activity of STK11.,similarity:Belongs to the Mo25 family.,
<b>matters needing attention</b>	Avoid repeated freezing and thawing!
<b>Usage suggestions</b>	This product can be used in immunological reaction related experiments. For more information, please consult technical personnel.



## Products Images



Western blot analysis of lysates from KB cells, primary antibody was diluted at 1:1000, 4° over night