

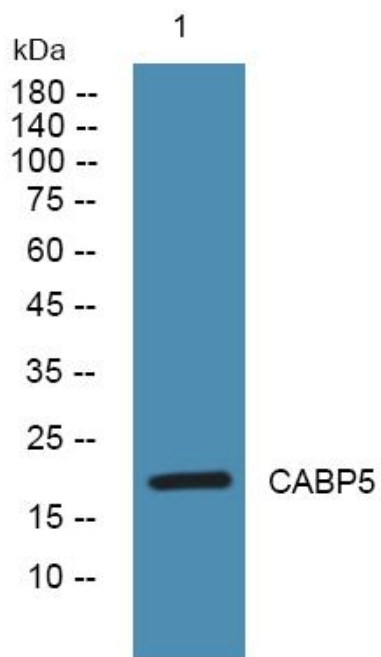


CABP5 Polyclonal Antibody

Catalog No	YP-Ab-05402
Isotype	IgG
Reactivity	Human;Mouse
Applications	WB;ELISA
Gene Name	CABP5 CABP3
Protein Name	Calcium-binding protein 5 (CaBP5)
Immunogen	Synthesized peptide derived from part region of human protein
Specificity	CABP5 Polyclonal Antibody detects endogenous levels of protein.
Formulation	Liquid in PBS containing 50% glycerol, and 0.02% sodium azide.
Source	Polyclonal, Rabbit,IgG
Purification	The antibody was affinity-purified from rabbit antiserum by affinity-chromatography using epitope-specific immunogen.
Dilution	WB 1:500-2000 ELISA 1:5000-20000
Concentration	1 mg/ml
Purity	≥90%
Storage Stability	-20°C/1 year
Synonyms	
Observed Band	19kD
Cell Pathway	Cytoplasm .
Tissue Specificity	Retina.
Function	similarity:Contains 3 EF-hand domains.,similarity:Contains 4 EF-hand domains.,tissue specificity:Retina.,
Background	The product of this gene belongs to a subfamily of calcium binding proteins, which share similarity to calmodulin. Calcium binding proteins are an important component of calcium mediated cellular signal transduction. Expression of this gene is retina-specific. The mouse homolog of this protein has been shown to express in the inner nuclear layer of the retina, suggested its role in neuronal functioning. The specific function of this gene is unknown. [provided by RefSeq, Oct 2009],
matters needing attention	Avoid repeated freezing and thawing!
Usage suggestions	This product can be used in immunological reaction related experiments. For more information, please consult technical personnel.



Products Images



Western blot analysis of lysates from SH-SY5Y cells, primary antibody was diluted at 1:1000, 4° over night