

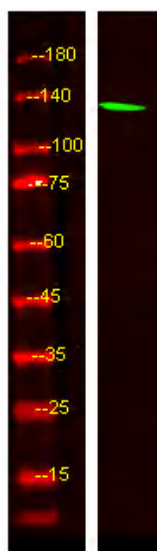


CMTA2 Polyclonal Antibody

Catalog No	YP-Ab-05407
Isotype	IgG
Reactivity	Human;Mouse
Applications	WB;ELISA
Gene Name	CAMTA2 KIAA0909
Protein Name	Calmodulin-binding transcription activator 2
Immunogen	Synthesized peptide derived from part region of human protein
Specificity	CMTA2 Polyclonal Antibody detects endogenous levels of protein.
Formulation	Liquid in PBS containing 50% glycerol, and 0.02% sodium azide.
Source	Polyclonal, Rabbit,IgG
Purification	The antibody was affinity-purified from rabbit antiserum by affinity-chromatography using epitope-specific immunogen.
Dilution	WB 1:500-2000 ELISA 1:5000-20000
Concentration	1 mg/ml
Purity	≥90%
Storage Stability	-20°C/1 year
Synonyms	
Observed Band	132kD
Cell Pathway	Nucleus .
Tissue Specificity	Detected in brain. Expressed at constant levels throughout the cell cycle in neuroblastoma cell lines.
Function	function:Transcription activator. May act as tumor suppressor.,similarity:Belongs to the CAMTA family.,similarity:Contains 1 CG-1 DNA-binding domain.,similarity:Contains 1 IPT/TIG domain.,similarity:Contains 2 IQ domains.,similarity:Contains 3 ANK repeats.,subunit:May interact with calmodulin .,tissue specificity:Detected in brain. Expressed at constant levels throughout the cell cycle in neuroblastoma cell lines.,
Background	The protein encoded by this gene is a member of the calmodulin-binding transcription activator protein family. Members of this family share a common domain structure that consists of a transcription activation domain, a DNA-binding domain, and a calmodulin-binding domain. The encoded protein may be a transcriptional coactivator of genes involved in cardiac growth. Alternate splicing results in multiple transcript variants.[provided by RefSeq, Jan 2010],
matters needing attention	Avoid repeated freezing and thawing!

**Usage suggestions**

This product can be used in immunological reaction related experiments. For more information, please consult technical personnel.

Products Images

Western Blot analysis of HEK293 lysis, using primary antibody at 1:1000 dilution. Secondary antibody(catalog#:RS23920) was diluted at 1:10000