



CPNS2 Polyclonal Antibody

Catalog No	YP-Ab-05410
Isotype	IgG
Reactivity	Human;Mouse
Applications	WB;ELISA
Gene Name	CAPNS2
Protein Name	Calpain small subunit 2 (CSS2) (Calcium-dependent protease small subunit 2)
Immunogen	Synthesized peptide derived from part region of human protein
Specificity	CPNS2 Polyclonal Antibody detects endogenous levels of protein.
Formulation	Liquid in PBS containing 50% glycerol, and 0.02% sodium azide.
Source	Polyclonal, Rabbit,IgG
Purification	The antibody was affinity-purified from rabbit antiserum by affinity-chromatography using epitope-specific immunogen.
Dilution	WB 1:500-2000 ELISA 1:5000-20000
Concentration	1 mg/ml
Purity	≥90%
Storage Stability	-20°C/1 year
Synonyms	
Observed Band	27kD
Cell Pathway	Cytoplasm . Cell membrane . Translocates to the plasma membrane upon calcium binding. .
Tissue Specificity	Urinary bladder carcinoma,
Function	function:Calcium-regulated non-lysosomal thiol-protease which catalyzes limited proteolysis of substrates involved in cytoskeletal remodeling and signal transduction. This small subunit may act as a tissue-specific chaperone of the large subunit, possibly by helping it fold into its correct conformation for activity.,similarity:Contains 4 EF-hand domains.,subcellular location:Translocates to the plasma membrane upon calcium binding.,subunit:Heterodimer of a large (catalytic) and a small (regulatory) subunit.,
Background	function:Calcium-regulated non-lysosomal thiol-protease which catalyzes limited proteolysis of substrates involved in cytoskeletal remodeling and signal transduction. This small subunit may act as a tissue-specific chaperone of the large subunit, possibly by helping it fold into its correct conformation for activity.,similarity:Contains 4 EF-hand domains.,subcellular location:Translocates to the plasma membrane upon calcium binding.,subunit:Heterodimer of a large (catalytic) and a small (regulatory) subunit.,



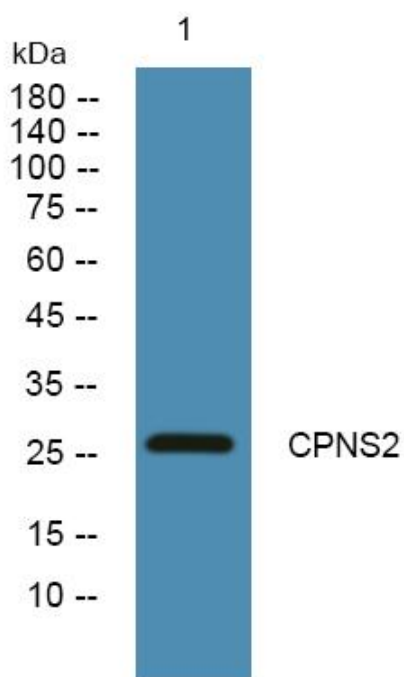
matters needing attention

Avoid repeated freezing and thawing!

Usage suggestions

This product can be used in immunological reaction related experiments. For more information, please consult technical personnel.

Products Images



Western blot analysis of lysates from Jarkat cells, primary antibody was diluted at 1:1000, 4° over night