



CAH11 Polyclonal Antibody

Catalog No	YP-Ab-05426
Isotype	IgG
Reactivity	Human;Mouse
Applications	WB;ELISA
Gene Name	CA11 CARP2 UNQ211/PRO237
Protein Name	Carbonic anhydrase-related protein 11 (CA-RP XI) (CA-XI) (CARP XI) (Carbonic anhydrase-related protein 2) (CA-RP II) (CARP-2)
Immunogen	Synthesized peptide derived from part region of human protein
Specificity	CAH11 Polyclonal Antibody detects endogenous levels of protein.
Formulation	Liquid in PBS containing 50% glycerol, and 0.02% sodium azide.
Source	Polyclonal, Rabbit,IgG
Purification	The antibody was affinity-purified from rabbit antiserum by affinity-chromatography using epitope-specific immunogen.
Dilution	WB 1:500-2000 ELISA 1:5000-20000
Concentration	1 mg/ml
Purity	≥90%
Storage Stability	-20°C/1 year
Synonyms	
Observed Band	36kD
Cell Pathway	Secreted .
Tissue Specificity	Expressed abundantly in the brain with moderate expression also present in spinal cord and thyroid.
Function	function:Does not have a catalytic activity.,similarity:Belongs to the alpha-carbonic anhydrase family.,tissue specificity:Expressed abundantly in the brain with moderate expression also present in spinal cord and thyroid.,
Background	Carbonic anhydrases (CAs) are a large family of zinc metalloenzymes that catalyze the reversible hydration of carbon dioxide. They participate in a variety of biological processes, including respiration, calcification, acid-base balance, bone resorption, and the formation of aqueous humor, cerebrospinal fluid, saliva, and gastric acid. They show extensive diversity in tissue distribution and in their subcellular localization. CA XI is likely a secreted protein, however, radical changes at active site residues completely conserved in CA isozymes with catalytic activity, make it unlikely that it has carbonic anhydrase activity. It shares properties in common with two other acatalytic CA isoforms, CA VIII and CA X. CA XI is most abundantly expressed in brain, and may play a general role in the central nervous system. [provided by RefSeq, Jul 2008],



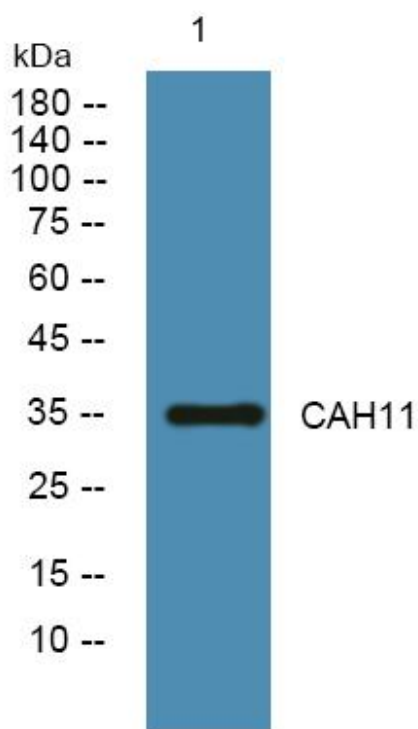
matters needing attention

Avoid repeated freezing and thawing!

Usage suggestions

This product can be used in immunological reaction related experiments. For more information, please consult technical personnel.

Products Images



Western blot analysis of lysates from PC12 cells, primary antibody was diluted at 1:1000, 4° over night