



# CEAM7 Polyclonal Antibody

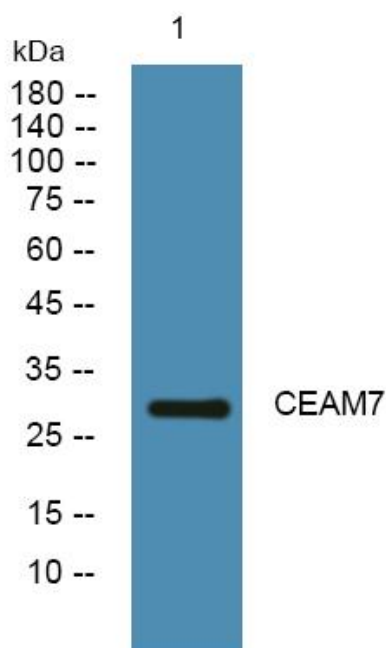
<b>Catalog No</b>	YP-Ab-05435
<b>Isotype</b>	IgG
<b>Reactivity</b>	Human;Rat;Mouse;
<b>Applications</b>	WB;ELISA
<b>Gene Name</b>	CEACAM7 CGM2
<b>Protein Name</b>	Carcinoembryonic antigen-related cell adhesion molecule 7 (Carcinoembryonic antigen CGM2)
<b>Immunogen</b>	Synthesized peptide derived from part region of human protein
<b>Specificity</b>	CEAM7 Polyclonal Antibody detects endogenous levels of protein.
<b>Formulation</b>	Liquid in PBS containing 50% glycerol, and 0.02% sodium azide.
<b>Source</b>	Polyclonal, Rabbit,IgG
<b>Purification</b>	The antibody was affinity-purified from rabbit antiserum by affinity-chromatography using epitope-specific immunogen.
<b>Dilution</b>	WB 1:500-2000 ELISA 1:5000-20000
<b>Concentration</b>	1 mg/ml
<b>Purity</b>	≥90%
<b>Storage Stability</b>	-20°C/1 year
<b>Synonyms</b>	
<b>Observed Band</b>	29kD
<b>Cell Pathway</b>	Cell membrane ; Lipid-anchor, GPI-anchor . Apical cell membrane . Localized to the apical glycoocalyx surface. .
<b>Tissue Specificity</b>	Expressed in columnar epithelial cells of the colon (at protein level) (PubMed:10436421). Strongly down-regulated in colonic adenocarcinomas.
<b>Function</b>	similarity:Belongs to the immunoglobulin superfamily. CEA family.,similarity:Contains 1 Ig-like C2-type (immunoglobulin-like) domain.,similarity:Contains 1 Ig-like V-type (immunoglobulin-like) domain.,tissue specificity:Strongly down-regulated in colonic adenocarcinomas.,
<b>Background</b>	This gene encodes a cell surface glycoprotein and member of the carcinoembryonic antigen (CEA) family of proteins. Expression of this gene may be downregulated in colon and rectal cancer. Additionally, lower expression levels of this gene may be predictive of rectal cancer recurrence. This gene is present in a CEA family gene cluster on chromosome 19. Alternative splicing results in multiple transcript variants. [provided by RefSeq, Jul 2015],
<b>matters needing attention</b>	Avoid repeated freezing and thawing!



### Usage suggestions

This product can be used in immunological reaction related experiments. For more information, please consult technical personnel.

## Products Images



Western blot analysis of lysates from A431 cells, primary antibody was diluted at 1:1000, 4° over night