



# PDE2A Polyclonal Antibody

<b>Catalog No</b>	YP-Ab-05456
<b>Isotype</b>	IgG
<b>Reactivity</b>	Human;Mouse;Rat
<b>Applications</b>	WB;ELISA
<b>Gene Name</b>	PDE2A
<b>Protein Name</b>	cGMP-dependent 3',5'-cyclic phosphodiesterase (EC 3.1.4.17) (Cyclic GMP-stimulated phosphodiesterase) (CGS-PDE) (cGSPDE)
<b>Immunogen</b>	Synthesized peptide derived from part region of human protein
<b>Specificity</b>	PDE2A Polyclonal Antibody detects endogenous levels of protein.
<b>Formulation</b>	Liquid in PBS containing 50% glycerol, and 0.02% sodium azide.
<b>Source</b>	Polyclonal, Rabbit,IgG
<b>Purification</b>	The antibody was affinity-purified from rabbit antiserum by affinity-chromatography using epitope-specific immunogen.
<b>Dilution</b>	WB 1:500-2000 ELISA 1:5000-20000
<b>Concentration</b>	1 mg/ml
<b>Purity</b>	≥90%
<b>Storage Stability</b>	-20°C/1 year
<b>Synonyms</b>	
<b>Observed Band</b>	103kD
<b>Cell Pathway</b>	[Isoform PDE2A3]: Cell membrane ; Lipid-anchor .; [Isoform PDE2A2]: Mitochondrion matrix . Mitochondrion inner membrane . Mitochondrion outer membrane .; [Isoform PDE2A1]: Cytoplasm .; [Isoform 5]: Mitochondrion .
<b>Tissue Specificity</b>	Widely expressed (PubMed:9210593, PubMed:29392776). Expressed in brain, with high expression observed in the corpus striatum (PubMed:29392776). Also expressed in heart, placenta, lung, skeletal muscle, kidney and pancreas (PubMed:9210593, PubMed:29392776).
<b>Function</b>	alternative products:Additional isoforms seem to exist. Experimental confirmation may be lacking for some isoforms,catalytic activity:Nucleoside 3',5'-cyclic phosphate + H(2)O = nucleoside 5'-phosphate.,function:Hydrolyzes both cyclic AMP (cAMP) and cyclic GMP (cGMP).,similarity:Belongs to the cyclic nucleotide phosphodiesterase family.,similarity:Contains 2 GAF domains.,subunit:Homodimer.,tissue specificity:Expressed in brain and to a lesser extent in heart, placenta, lung, skeletal muscle, kidney and pancreas.,
<b>Background</b>	alternative products:Additional isoforms seem to exist. Experimental confirmation may be lacking for some isoforms,catalytic activity:Nucleoside 3',5'-cyclic phosphate + H(2)O = nucleoside 5'-phosphate.,function:Hydrolyzes both cyclic AMP (cAMP) and cyclic GMP (cGMP).,similarity:Belongs to the cyclic nucleotide phosphodiesterase family.,similarity:Contains 2 GAF



domains.,subunit:Homodimer.,tissue specificity:Expressed in brain and to a lesser extent in heart, placenta, lung, skeletal muscle, kidney and pancreas.,

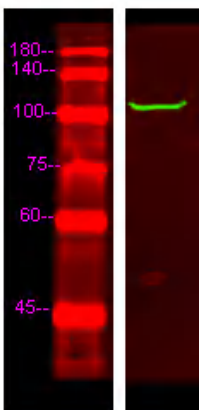
**matters needing attention**

Avoid repeated freezing and thawing!

**Usage suggestions**

This product can be used in immunological reaction related experiments. For more information, please consult technical personnel.

**Products Images**



Western Blot analysis of Hela lysis, using primary antibody at 1:1000 dilution. Secondary antibody(catalog#:RS23920) was diluted at 1:10000