



CHD6 Polyclonal Antibody

Catalog No	YP-Ab-05467
Isotype	IgG
Reactivity	Human;Rat;Mouse;
Applications	IHC;IF
Gene Name	CHD6 CHD5 KIAA1335 RIGB
Protein Name	Chromodomain-helicase-DNA-binding protein 6 (CHD-6) (EC 3.6.4.12) (ATP-dependent helicase CHD6) (Radiation-induced gene B protein)
Immunogen	Synthesized peptide derived from part region of human protein
Specificity	CHD6 Polyclonal Antibody detects endogenous levels of protein.
Formulation	Liquid in PBS containing 50% glycerol, and 0.02% sodium azide.
Source	Polyclonal, Rabbit,IgG
Purification	The antibody was affinity-purified from rabbit antiserum by affinity-chromatography using epitope-specific immunogen.
Dilution	IHC-p 1:50-300. IF 1:50-200
Concentration	1 mg/ml
Purity	≥90%
Storage Stability	-20°C/1 year
Synonyms	
Observed Band	298kD
Cell Pathway	Nucleus, nucleoplasm . Enriched at sites of mRNA synthesis (PubMed:17027977). During influenza A virus infection, localizes to inactive chromatin. .
Tissue Specificity	Widely expressed.
Function	function:Probable transcription regulator.,PTM:Phosphorylated upon DNA damage, probably by ATM or ATR.,sequence caution:The sequence differs from position 1528 onward for unknown reasons.,similarity:Belongs to the SNF2/RAD54 helicase family.,similarity:Contains 1 helicase ATP-binding domain.,similarity:Contains 1 helicase C-terminal domain.,similarity:Contains 2 chromo domains.,tissue specificity:Ubiquitous.,
Background	This gene encodes a member of the SNF2/RAD54 helicase protein family. The encoded protein contains two chromodomains, a helicase domain, and an ATPase domain. Several multi-subunit protein complexes remodel chromatin to allow patterns of cell type-specific gene expression, and the encoded protein is thought to be a core member of one or more of these chromatin remodeling complexes. The encoded protein may function as a transcriptional repressor and is involved in the cellular repression of influenza virus replication. [provided by RefSeq, Jul 2013],



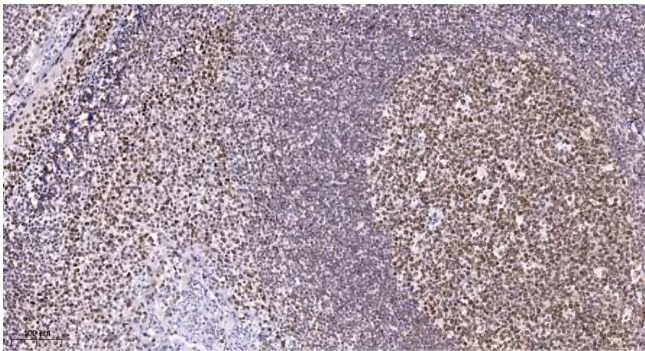
matters needing attention

Avoid repeated freezing and thawing!

Usage suggestions

This product can be used in immunological reaction related experiments. For more information, please consult technical personnel.

Products Images



Immunohistochemical analysis of paraffin-embedded human tonsil. 1, Antibody was diluted at 1:200(4° overnight). 2, Tris-EDTA,pH9.0 was used for antigen retrieval. 3,Secondary antibody was diluted at 1:200(room temperature, 45min).