



# CNTFR Polyclonal Antibody

<b>Catalog No</b>	YP-Ab-05471
<b>Isotype</b>	IgG
<b>Reactivity</b>	Human;Mouse;Rat
<b>Applications</b>	WB;ELISA
<b>Gene Name</b>	CNTFR
<b>Protein Name</b>	Ciliary neurotrophic factor receptor subunit alpha (CNTF receptor subunit alpha) (CNTFR-alpha)
<b>Immunogen</b>	Synthesized peptide derived from part region of human protein
<b>Specificity</b>	CNTFR Polyclonal Antibody detects endogenous levels of protein.
<b>Formulation</b>	Liquid in PBS containing 50% glycerol, and 0.02% sodium azide.
<b>Source</b>	Polyclonal, Rabbit,IgG
<b>Purification</b>	The antibody was affinity-purified from rabbit antiserum by affinity-chromatography using epitope-specific immunogen.
<b>Dilution</b>	WB 1:500-2000 ELISA 1:5000-20000
<b>Concentration</b>	1 mg/ml
<b>Purity</b>	≥90%
<b>Storage Stability</b>	-20°C/1 year
<b>Synonyms</b>	
<b>Observed Band</b>	40kD
<b>Cell Pathway</b>	Cell membrane; Lipid-anchor, GPI-anchor.
<b>Tissue Specificity</b>	Nervous system and skeletal muscle.
<b>Function</b>	domain:The WSXWS motif appears to be necessary for proper protein folding and thereby efficient intracellular transport and cell-surface receptor binding.,function:Binds to CNTF. The alpha chain provides the receptor specificity.,similarity:Belongs to the type I cytokine receptor family. Type 3 subfamily.,similarity:Contains 1 Ig-like C2-type (immunoglobulin-like) domain.,similarity:Contains 2 fibronectin type-III domains.,subunit:Heterotrimer of the alpha chain, LIFR and IL6ST.,tissue specificity:Nervous system and skeletal muscle.,
<b>Background</b>	This gene encodes a member of the type 1 cytokine receptor family. The encoded protein is the ligand-specific component of a tripartite receptor for ciliary neurotrophic factor, which plays a critical role in neuronal cell survival, differentiation and gene expression. Binding of ciliary neurotrophic factor to the encoded protein recruits the transmembrane components of the receptor, gp130 and leukemia inhibitory factor receptor, facilitating signal transduction. Single nucleotide polymorphisms in this gene may be associated with variations in



muscle strength, as well as early onset of eating disorders. Alternatively spliced transcript variants have been observed for this gene. [provided by RefSeq, May 2011],

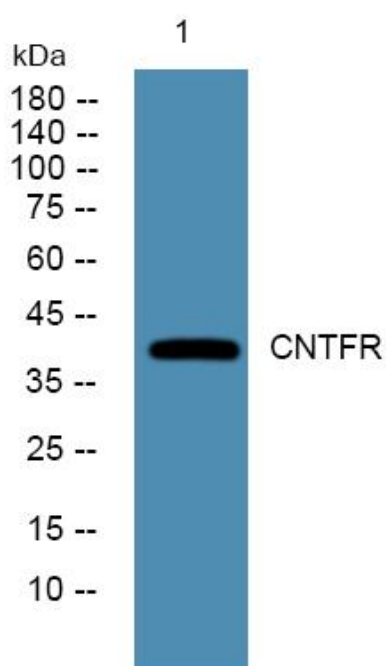
**matters needing attention**

Avoid repeated freezing and thawing!

**Usage suggestions**

This product can be used in immunological reaction related experiments. For more information, please consult technical personnel.

**Products Images**



Western blot analysis of lysates from HCT116 cells, primary antibody was diluted at 1:1000, 4° over night