

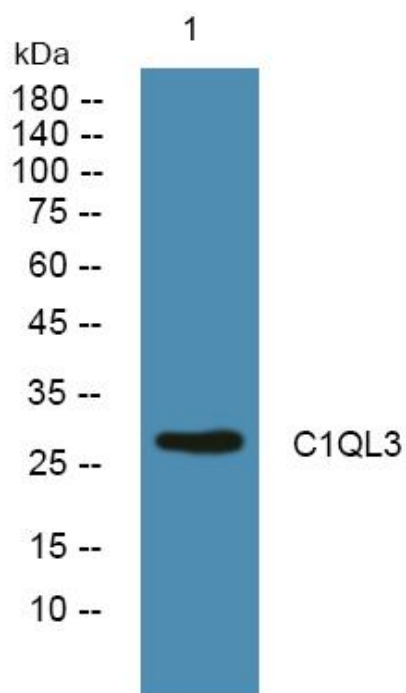


# C1QL3 Polyclonal Antibody

<b>Catalog No</b>	YP-Ab-05488
<b>Isotype</b>	IgG
<b>Reactivity</b>	Human;Mouse
<b>Applications</b>	WB;ELISA
<b>Gene Name</b>	C1QL3
<b>Protein Name</b>	Complement C1q-like protein 3
<b>Immunogen</b>	Synthesized peptide derived from part region of human protein AA range: 110-150
<b>Specificity</b>	C1QL3 Polyclonal Antibody detects endogenous levels of protein.
<b>Formulation</b>	Liquid in PBS containing 50% glycerol, and 0.02% sodium azide.
<b>Source</b>	Polyclonal, Rabbit,IgG
<b>Purification</b>	The antibody was affinity-purified from rabbit antiserum by affinity-chromatography using epitope-specific immunogen.
<b>Dilution</b>	WB 1:500-2000 ELISA 1:5000-20000
<b>Concentration</b>	1 mg/ml
<b>Purity</b>	≥90%
<b>Storage Stability</b>	-20°C/1 year
<b>Synonyms</b>	
<b>Observed Band</b>	28kD
<b>Cell Pathway</b>	Secreted .
<b>Tissue Specificity</b>	Highly expressed in adipose tissue, with expression levels at least 2 orders of magnitude higher than in other tissues, including brain and kidney.
<b>Function</b>	similarity:Contains 1 C1q domain.,similarity:Contains 1 collagen-like domain.,
<b>Background</b>	similarity:Contains 1 C1q domain.,similarity:Contains 1 collagen-like domain.,
<b>matters needing attention</b>	Avoid repeated freezing and thawing!
<b>Usage suggestions</b>	This product can be used in immunological reaction related experiments. For more information, please consult technical personnel.



## Products Images



Western blot analysis of lysates from SW480 cells, primary antibody was diluted at 1:1000, 4° over night