

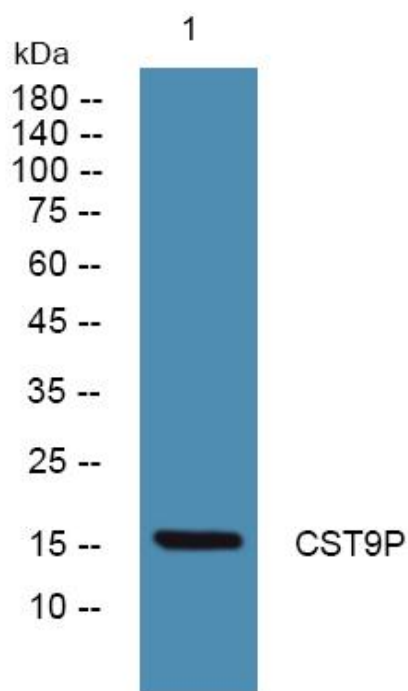


CST9P Polyclonal Antibody

Catalog No	YP-Ab-05500
Isotype	IgG
Reactivity	Human;Rat;Mouse;
Applications	WB;ELISA
Gene Name	CST9LP1
Protein Name	Putative cystatin-9-like protein CST9LP1 (Cystatin-9-like pseudogene 1)
Immunogen	Synthesized peptide derived from part region of human protein
Specificity	CST9P Polyclonal Antibody detects endogenous levels of protein.
Formulation	Liquid in PBS containing 50% glycerol, and 0.02% sodium azide.
Source	Polyclonal, Rabbit,IgG
Purification	The antibody was affinity-purified from rabbit antiserum by affinity-chromatography using epitope-specific immunogen.
Dilution	WB 1:500-2000 ELISA 1:5000-20000
Concentration	1 mg/ml
Purity	≥90%
Storage Stability	-20°C/1 year
Synonyms	
Observed Band	16kD
Cell Pathway	Secreted .
Tissue Specificity	
Function	similarity:Belongs to the cystatin family.,
Background	similarity:Belongs to the cystatin family.,
matters needing attention	Avoid repeated freezing and thawing!
Usage suggestions	This product can be used in immunological reaction related experiments. For more information, please consult technical personnel.



Products Images



Western blot analysis of lysates from KB cells, primary antibody was diluted at 1:1000, 4° over night