



DHRS7 Polyclonal Antibody

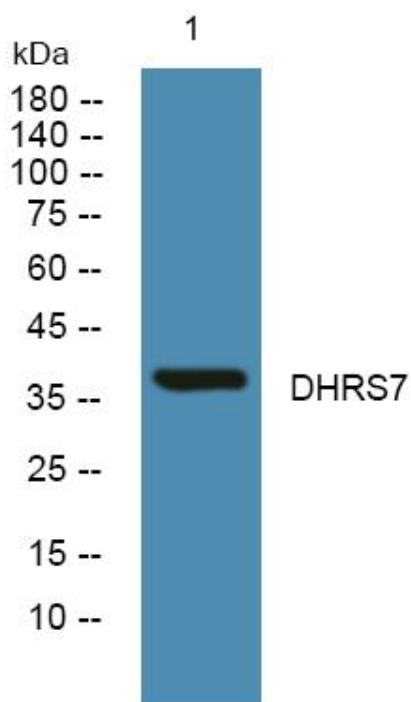
| | |
|----------------------------------|---|
| Catalog No | YP-Ab-05512 |
| Isotype | IgG |
| Reactivity | Human;Rat;Mouse; |
| Applications | WB;ELISA |
| Gene Name | DHRS7 DHRS7A RETSDR4 CGI-86 UNQ285/PRO3448 |
| Protein Name | Dehydrogenase/reductase SDR family member 7 (EC 1.1.-.-) (Retinal short-chain dehydrogenase/reductase 4) (retSDR4) |
| Immunogen | Synthesized peptide derived from part region of human protein |
| Specificity | DHRS7 Polyclonal Antibody detects endogenous levels of protein. |
| Formulation | Liquid in PBS containing 50% glycerol, and 0.02% sodium azide. |
| Source | Polyclonal, Rabbit,IgG |
| Purification | The antibody was affinity-purified from rabbit antiserum by affinity-chromatography using epitope-specific immunogen. |
| Dilution | WB 1:500-2000 ELISA 1:5000-20000 |
| Concentration | 1 mg/ml |
| Purity | ≥90% |
| Storage Stability | -20°C/1 year |
| Synonyms | |
| Observed Band | 37kD |
| Cell Pathway | Endoplasmic reticulum membrane . Bound to the endoplasmic reticulum membrane, possibly through a N-terminus anchor. The main bulk of the polypeptide chain was first reported to be facing toward the lumen of the endoplasmic reticulum (PubMed:24246760). However, it was later shown to be facing the cytosol (PubMed:28457967). . |
| Tissue Specificity | Found predominantly in the adrenal glands, liver, thyroid, prostate, small intestine, colon, stomach, kidney and brain (PubMed:26466768). Lower levels observed in skeletal muscle, the lung and the spleen (PubMed:26466768). |
| Function | similarity:Belongs to the short-chain dehydrogenases/reductases (SDR) family., |
| Background | This gene encodes a member of the short-chain dehydrogenases/reductases (SDR) family, which has over 46,000 members. Members in this family are enzymes that metabolize many different compounds, such as steroid hormones, prostaglandins, retinoids, lipids and xenobiotics. [provided by RefSeq, Apr 2016], |
| matters needing attention | Avoid repeated freezing and thawing! |



Usage suggestions

This product can be used in immunological reaction related experiments. For more information, please consult technical personnel.

Products Images



Western blot analysis of lysates from KB cells, primary antibody was diluted at 1:1000, 4° over night