



MARH8 Polyclonal Antibody

Catalog No	YP-Ab-05556
Isotype	IgG
Reactivity	Human;Rat;Mouse;
Applications	WB;ELISA
Gene Name	MARCH8 MIR RNF178
Protein Name	E3 ubiquitin-protein ligase MARCH8 (EC 6.3.2.-) (Cellular modulator of immune recognition) (c-MIR) (Membrane-associated RING finger protein 8) (Membrane-associated RING-CH protein VIII) (MARCH-VIII) (
Immunogen	Synthesized peptide derived from part region of human protein
Specificity	MARH8 Polyclonal Antibody detects endogenous levels of protein.
Formulation	Liquid in PBS containing 50% glycerol, and 0.02% sodium azide.
Source	Polyclonal, Rabbit,IgG
Purification	The antibody was affinity-purified from rabbit antiserum by affinity-chromatography using epitope-specific immunogen.
Dilution	WB 1:500-2000 ELISA 1:5000-20000
Concentration	1 mg/ml
Purity	≥90%
Storage Stability	-20°C/1 year
Synonyms	
Observed Band	32kD
Cell Pathway	Cytoplasmic vesicle membrane ; Multi-pass membrane protein . Lysosome membrane ; Multi-pass membrane protein . Early endosome membrane ; Multi-pass membrane protein .
Tissue Specificity	Broadly expressed. Present in immature dendritic cells (at protein level).
Function	domain:The RING-CH-type zinc finger domain is required for E3 ligase activity.,function:E3 ubiquitin-protein ligase that may regulate immune responses by promoting ubiquitination of MHC-II and CD86, which leads to their subsequent endocytosis and lysosomal degradation. May also promote ubiquitination and endocytosis of TFRC and FAS. E3 ubiquitin ligases accept ubiquitin from an E2 ubiquitin-conjugating enzyme in the form of a thioester and then directly transfer the ubiquitin to targeted substrates.,pathway:Protein modification; protein ubiquitination.,similarity:Contains 1 RING-CH-type zinc finger.,subunit:Interacts with CD86.,tissue specificity:Broadly expressed. Present in immature dendritic cells (at protein level).,
Background	MARCH8 is a member of the MARCH family of membrane-bound E3 ubiquitin ligases (EC 6.3.2.19). MARCH enzymes add ubiquitin (see MIM 191339) to target lysines in substrate proteins, thereby signaling their vesicular transport between



membrane compartments. MARCH8 induces the internalization of several membrane glycoproteins (Goto et al., 2003 [PubMed 12582153]; Bartee et al., 2004 [PubMed 14722266]).[supplied by OMIM, Apr 2010],

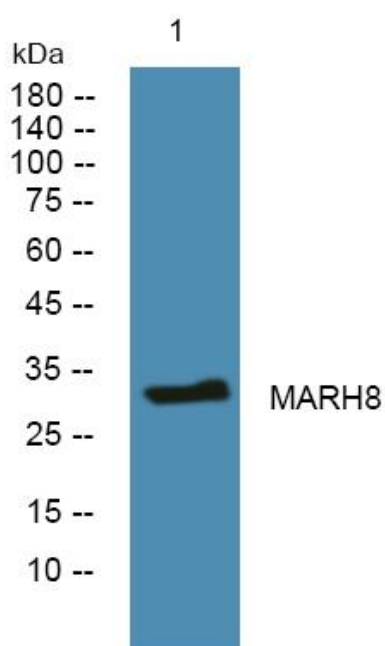
matters needing attention

Avoid repeated freezing and thawing!

Usage suggestions

This product can be used in immunological reaction related experiments. For more information, please consult technical personnel.

Products Images



Western blot analysis of lysates from SW480 cells, primary antibody was diluted at 1:1000, 4° over night