



EF1D Polyclonal Antibody

Catalog No	YP-Ab-05568
Isotype	IgG
Reactivity	Human;Mouse;Rat
Applications	WB;ELISA
Gene Name	EEF1D EF1D
Protein Name	Elongation factor 1-delta (EF-1-delta) (Antigen NY-CO-4)
Immunogen	Synthesized peptide derived from part region of human protein
Specificity	EF1D Polyclonal Antibody detects endogenous levels of protein.
Formulation	Liquid in PBS containing 50% glycerol, and 0.02% sodium azide.
Source	Polyclonal, Rabbit,IgG
Purification	The antibody was affinity-purified from rabbit antiserum by affinity-chromatography using epitope-specific immunogen.
Dilution	WB 1:500-2000 ELISA 1:5000-20000
Concentration	1 mg/ml
Purity	≥90%
Storage Stability	-20°C/1 year
Synonyms	
Observed Band	30kD
Cell Pathway	[Isoform 2]: Nucleus .
Tissue Specificity	Isoform 2 is specifically expressed in brain, cerebellum and testis.
Function	function:EF-1-beta and EF-1-delta stimulate the exchange of GDP bound to EF-1-alpha to GTP.,PTM:Phosphorylated upon DNA damage, probably by ATM or ATR.,similarity:Belongs to the EF-1-beta/EF-1-delta family.,subunit:EF-1 is composed of 4 subunits: alpha, beta, delta, and gamma.,
Background	eukaryotic translation elongation factor 1 delta(EEF1D) Homo sapiens This gene encodes a subunit of the elongation factor-1 complex, which is responsible for the enzymatic delivery of aminoacyl tRNAs to the ribosome. This subunit, delta, functions as guanine nucleotide exchange factor. It is reported that following HIV-1 infection, this subunit interacts with HIV-1 Tat. This interaction results in repression of translation of host cell proteins and enhanced translation of viral proteins. Several alternatively spliced transcript variants encoding multiple isoforms have been found for this gene. Related pseudogenes have been defined on chromosomes 1, 6, 7, 9, 11, 13, 17, 19.[provided by RefSeq, Aug 2010],



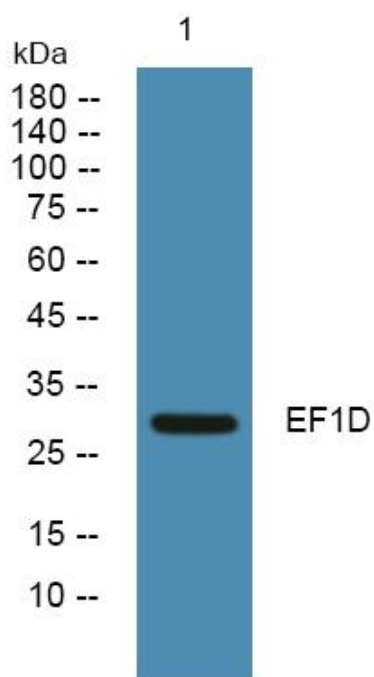
matters needing attention

Avoid repeated freezing and thawing!

Usage suggestions

This product can be used in immunological reaction related experiments. For more information, please consult technical personnel.

Products Images



Western blot analysis of lysates from SH-SY5Y cells, primary antibody was diluted at 1:1000, 4° over night