



FX4L5 Polyclonal Antibody

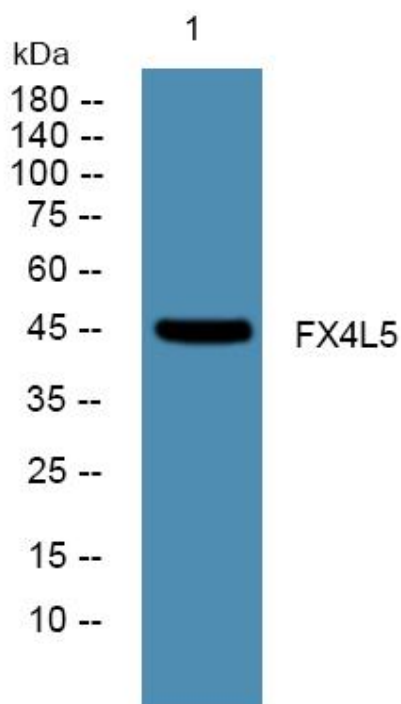
Catalog No	YP-Ab-05590
Isotype	IgG
Reactivity	Human;Rat;Mouse;
Applications	WB;ELISA
Gene Name	FOXD4L5
Protein Name	Forkhead box protein D4-like 5 (FOXD4-like 5)
Immunogen	Synthesized peptide derived from part region of human protein
Specificity	FX4L5 Polyclonal Antibody detects endogenous levels of protein.
Formulation	Liquid in PBS containing 50% glycerol, and 0.02% sodium azide.
Source	Polyclonal, Rabbit,IgG
Purification	The antibody was affinity-purified from rabbit antiserum by affinity-chromatography using epitope-specific immunogen.
Dilution	WB 1:500-2000 ELISA 1:5000-20000
Concentration	1 mg/ml
Purity	≥90%
Storage Stability	-20°C/1 year
Synonyms	
Observed Band	45kD
Cell Pathway	Nucleus .
Tissue Specificity	
Function	miscellaneous:5 FOXD4-like proteins (FOXD4L2, FOXD4L3, FOXD4L4, FOXD4L5 and FOXD4L6) are encoded by a strongly repeated region of the 9q12 chromosome region. They are very similar and it is therefore difficult to provide a clear and unambiguous protein sequence. Our sequences are in agreement with HGNC nomenclature.,similarity:Contains 1 fork-head DNA-binding domain.,
Background	miscellaneous:5 FOXD4-like proteins (FOXD4L2, FOXD4L3, FOXD4L4, FOXD4L5 and FOXD4L6) are encoded by a strongly repeated region of the 9q12 chromosome region. They are very similar and it is therefore difficult to provide a clear and unambiguous protein sequence. Our sequences are in agreement with HGNC nomenclature.,similarity:Contains 1 fork-head DNA-binding domain.,
matters needing attention	Avoid repeated freezing and thawing!



Usage suggestions

This product can be used in immunological reaction related experiments. For more information, please consult technical personnel.

Products Images



Western blot analysis of lysates from Jarkat cells, primary antibody was diluted at 1:1000, 4°over night